

## Human S100A14 Low Endotoxin Low Endotoxin & Sterilized

Cat# CY-R2464

Amount: 100 µg (1.0 µg/µl)

Lot:

### Introduction:

S100A14 (BCMP84) is a member of the S100 family of EF-hand Ca<sup>2+</sup>-binding proteins, which is expressed in is ubiquitously expressed in normal human tissues of epithelial origin. It has been demonstrated that S100A14 transcript is down-regulated in many immortalized and tumour cell lines from different tissues. In contrast, studies on human primary tumours, including lung and breast, revealed predominantly up-regulation of the gene at the mRNA and protein level. S100A14 shows heterogenic expression in tumors, demonstrating its overexpression in ovary, breast, and uterus tumors and underexpression in kidney, rectum, and colon tumors, a pattern suggesting distinct regulation with potentially important functions in malignant transformation.

### Product Description:

Full length of human S100A14, containing an N-terminal GST tag, expressed in *E. coli*.

### Gene Information:

The gene accession number is NM\_020672.

### Gene Aliases:

BCMP84

### Formulation:

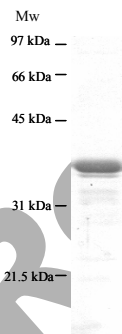
Supplied frozen in 2X phosphate buffered saline (2X PBS) containing 50 % glycerol.

### Endotoxin Concentration:

< 0.01 EU/µg as determined by Limulus Amebocyte Lysate (LAL) assay

### Molecular Weight:

The recombinant human S100A14 demonstrates approximately 35 kDa band by SDS-PAGE analysis.



**Storage:**

Store product at -70°C. For optimal storage, aliquot target into smaller quantities after centrifugation and store at recommended temperature. For most favorable performance, AVOID REPEATED HANDLING AND MULTIPLE FREEZE/THAW CYCLES.

**Stability:**

Unopened vial at -70 °C, for 1 year after delivery.

**References:**

1. Pietas, A., Schluns, K., Marenholz, I., Schafer, B. W., Heizmann, C. W., Petersen, I. *Genomics* **79**: 513-522, 2002.
2. Adam, P. J. et al. *J. Biol. Chem.* **278**: 6482-6489, 2003.
3. Wang HY, Zhang JY, Cui JT, Tan XH, Li WM, Gu J, Lu YY. *Oncol Rep.* **23**: 45-52, 2010
4. Chen, H., Yu, D., Luo, A., Tan, W., Zhang, C., Zhao, D., Yang, M., Liu, J., Lin, D., Liu, Z. *Cancer Res.* **69**: 3451-3457, 2009

**Related Products**

- \* CircuLex S100A13 ELISA Kit: Cat# CY-8057
- \* CircuLex S100A12 ELISA Kit: Cat# CY-8058
- \* CircuLex S100P ELISA Kit: Cat# CY-8060
- \* CircuLex S100A8-MRP8 ELISA Kit: Cat# CY-8061
- \* CircuLex S100A9-MRP14 ELISA Kit: Cat# CY-8062
- \* CircuLex S100A11 ELISA Kit: Cat# CY-8063
- \* CircuLex S100A14 ELISA Kit: Cat# CY-8064
- \* CircuLex S100A7/Psoriasin ELISA Kit: Cat# CY-8073
- \* CircuLex S100A4 ELISA Kit Ver.2: Cat# CY-8086
  
- \* Anti-Human S100A3 (Clone YK-3E3): Cat# CY-M1039
- \* Anti-Human S100A4 (p9Ka): Cat# CY-P1026
- \* Anti-Human S100P: Cat# CY-P1028
- \* Anti-Human S100A10: Cat# CY-P1033
- \* Anti-Human S100A16: Cat# CY-P1034
- \* Anti-Human S100A3: Cat# CY-P1039
- \* Anti-Human S100A2: Cat# CY-P1040
  
- \* Human S100B: Cat# CY-R2250
- \* Human S100A1: Cat# CY-R2251
- \* Human S100A2: Cat# CY-R2252
- \* Human S100A3: Cat# CY-R2253
- \* Human S100A4: Cat# CY-R2254
- \* Human S100A5: Cat# CY-R2255
- \* Human S100A6: Cat# CY-R2256
- \* Human S100A7: Cat# CY-R2257
- \* Human S100A8: Cat# CY-R2258
- \* Human S100A9: Cat# CY-R2259-G

- \* Human S100A9: Cat# CY-R2259-H
- \* Human S100A10: Cat# CY-R2260
- \* Human S100A12: Cat# CY-R2262-G
- \* Human S100A12: Cat# CY-R2262-H
- \* Human S100A13: Cat# CY-R2263
- \* Human S100A14: Cat# CY-R2264
- \* Human S100A16: Cat# CY-R2266
- \* Human S100P: Cat# CY-R2267
- \* Human S100A11: Cat# CY-R2269
  
- \* Human S100A1 Low Endotoxin: Cat# CY-R2451
- \* Human S100A3 Low Endotoxin: Cat# CY-R2453
- \* Human S100A4 Low Endotoxin: Cat# CY-R2454
- \* Human S100A7 Low Endotoxin: Cat# CY-R2457
- \* Human S100A8 Low Endotoxin: Cat# CY-R2458
- \* Human S100A9 Low Endotoxin: Cat# CY-R2459-G
- \* Human S100A11 Low Endotoxin: Cat# CY-R2461
- \* Human S100A12 Low Endotoxin: Cat# CY-R2462-G
- \* Human S100A14 Low Endotoxin: Cat# CY-R2464
- \* Human S100P Low Endotoxin: Cat# CY-R2467

**PRODUCED BY**

CycLex Co., Ltd.  
1063-103 Terasawaoka  
Ina, Nagano 396-0002  
Japan  
Fax: +81-265-76-7618  
e-mail: [info@cyclex.co.jp](mailto:info@cyclex.co.jp)  
URL: <http://www.cyclex.co.jp>

CycLex/CircuLex products are supplied for research use only. CycLex/CircuLex products and components thereof may not be resold, modified for resale, or used to manufacture commercial products without prior written approval from CycLex Co., Ltd.. To inquire about licensing for such commercial use, please contact us via email.