

## Human S100A8 Low Endotoxin Low Endotoxin & Sterilized

Cat# CY-R2458

Amount: 100 µg (4.0 µg/µl)

Lot:

### Introduction:

S100A8 (MRP8, calgranulin A) is a member of the S100 family of calcium-binding proteins (22 members), generally coexpressed with S100A9 (MRP14, calgranulin B). A8 and A9 accumulate in inflammatory fluids and are postulated to be involved in the pathogenesis of chronic human inflammatory diseases such as rheumatoid arthritis (RA), cystic fibrosis, Crohn's disease, ulcerative colitis, allergic dermatitis, and infection. A8 and A9 are expressed in macrophages in the lining and sublining layers of the rheumatoid synovium. A8 and A9 comprise ~40% of the cytosolic protein of neutrophils and their intracellular expression has been associated with calcium sensing, myeloid cell differentiation, and a variety of inflammatory processes, particularly those involved in neutrophil activation and arachidonic acid transport.

### Product Description:

Full length of human S100A8, containing an N-terminal GST tag, expressed in *E. coli*.

### Gene Information:

The gene accession number is NM\_002964.

### Gene Aliases:

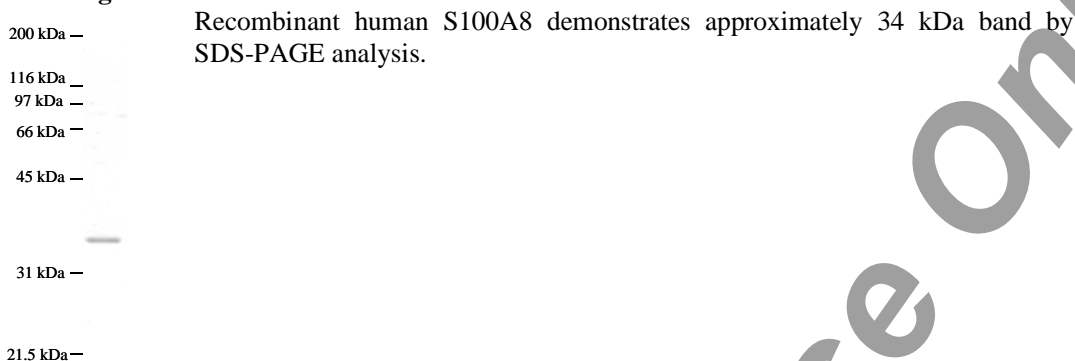
MRP8, Calgranulin A, CAGA, CFAG, p8, MAC387, 60B8Ag, L1Ag, CP-10, MIF, NIF

### Formulation:

Recombinant human S100A8 is supplied frozen in phosphate buffered saline (PBS) containing 50 % glycerol.

### Endotoxin Concentration:

< 0.01 EU/µg as determined by Limulus Amebocyte Lysate (LAL) assay

**Molecular Weight:****Storage:**

Store product at -70°C. For optimal storage, aliquot target into smaller quantities after centrifugation and store at recommended temperature. For most favorable performance, AVOID REPEATED HANDLING AND MULTIPLE FREEZE/THAW CYCLES.

**Stability:**

Unopened vial at -70 °C, for 1 year after delivery.

**References:**

1. Foell, D., M. Frosch, C. Sorg, J. Roth. 2004. Phagocyte-specific calcium-binding S100 proteins as clinical laboratory markers of inflammation. *Clin. Chim. Acta* 344:37.
2. Youssef, P., J. Roth, M. Frosch, P. Costello, O. Fitzgerald, C. Sorg, B. Bresnihan. 1999. Expression of myeloid related proteins (MRP) 8 and 14 and the MRP8/14 heterodimer in rheumatoid arthritis synovial membrane. *J. Rheumatol.* 26:2523.
3. Xu, K., C. L. Geczy. 2000. IFN- $\gamma$  and TNF regulate macrophage expression of the chemotactic S100 protein S100A8. *J. Immunol.* 164:4916
4. Nacken, W., J. Roth, C. Sorg, C. Kerkhoff. 2003. S100A9/S100A8: myeloid representatives of the S100 protein family as prominent players in innate immunity. *Microsc. Res. Tech.* 60:569.

**Related Products**

- \* CircuLex S100A13 ELISA Kit: Cat# CY-8057
- \* CircuLex S100A12 ELISA Kit: Cat# CY-8058
- \* CircuLex S100P ELISA Kit: Cat# CY-8060
- \* CircuLex S100A8-MRP8 ELISA Kit: Cat# CY-8061
- \* CircuLex S100A9-MRP14 ELISA Kit: Cat# CY-8062
- \* CircuLex S100A11 ELISA Kit: Cat# CY-8063
- \* CircuLex S100A14 ELISA Kit: Cat# CY-8064
- \* CircuLex S100A7/Psoriasin ELISA Kit: Cat# CY-8073
- \* CircuLex S100A4 ELISA Kit Ver.2: Cat# CY-8086
  
- \* Anti-Human S100A3 (Clone YK-3E3): Cat# CY-M1039
- \* Anti-Human S100A4 (p9Ka): Cat# CY-P1026
- \* Anti-Human S100P: Cat# CY-P1028
- \* Anti-Human S100A10: Cat# CY-P1033



Human S100A8 Low Endotoxin  
Product Data Sheet

For Research Use Only, Not for use in diagnostic procedures

- \* Anti-Human S100A16: Cat# CY-P1034
- \* Anti-Human S100A3: Cat# CY-P1039
- \* Anti-Human S100A2: Cat# CY-P1040
  
- \* Human S100B: Cat# CY-R2250
- \* Human S100A1: Cat# CY-R2251
- \* Human S100A2: Cat# CY-R2252
- \* Human S100A3: Cat# CY-R2253
- \* Human S100A4: Cat# CY-R2254
- \* Human S100A5: Cat# CY-R2255
- \* Human S100A6: Cat# CY-R2256
- \* Human S100A7: Cat# CY-R2257
- \* Human S100A8: Cat# CY-R2258
- \* Human S100A9: Cat# CY-R2259-G
- \* Human S100A9: Cat# CY-R2259-H
- \* Human S100A10: Cat# CY-R2260
- \* Human S100A12: Cat# CY-R2262-G
- \* Human S100A12: Cat# CY-R2262-H
- \* Human S100A13: Cat# CY-R2263
- \* Human S100A14: Cat# CY-R2264
- \* Human S100A16: Cat# CY-R2266
- \* Human S100P: Cat# CY-R2267
- \* Human S100A11: Cat# CY-R2269
  
- \* Human S100A1 Low Endotoxin: Cat# CY-R2451
- \* Human S100A3 Low Endotoxin: Cat# CY-R2453
- \* Human S100A4 Low Endotoxin: Cat# CY-R2454
- \* Human S100A7 Low Endotoxin: Cat# CY-R2457
- \* Human S100A8 Low Endotoxin: Cat# CY-R2458
- \* Human S100A9 Low Endotoxin: Cat# CY-R2459-G
- \* Human S100A11 Low Endotoxin: Cat# CY-R2461
- \* Human S100A12 Low Endotoxin: Cat# CY-R2462-G
- \* Human S100A14 Low Endotoxin: Cat# CY-R2464
- \* Human S100P Low Endotoxin: Cat# CY-R2467

**PRODUCED BY**

CycLex Co., Ltd.  
1063-103 Terasawaoka  
Ina, Nagano 396-0002  
Japan  
Fax: +81-265-76-7618  
e-mail: [info@cyclex.co.jp](mailto:info@cyclex.co.jp)  
URL: <http://www.cyclex.co.jp>

CycLex/CircuLex products are supplied for research use only. CycLex/CircuLex products and components thereof may not be resold, modified for resale, or used to manufacture commercial products without prior written approval from CycLex Co., Ltd.. To inquire about licensing for such commercial use, please contact us via email.