

Human S100A7 Low Endotoxin Low Endotoxin & Sterilized

Cat# CY-R2457

Amount: 100 µg (2µg/µl)

Lot:

Introduction:

Human psoriasin was first identified as an over-expressed secreted protein in psoriatic skin. Psoriasin also called S100A7, is distributed in the cytoplasm of keratinocytes in normal human epidermis and is present at the cell periphery in terminally differentiated keratinocytes. The peripheral distribution observed in differentiated cells may be important, since, under some conditions, S100A7 may be released from keratinocytes. Several S100 proteins are thought to be secreted. Indeed, S100A7 has been shown to function as a chemotactic agent and as a cytokine, and to attract CD4+ lymphocytes and neutrophils. Originally characterized as a marker of psoriasis, S100A7 overexpression is seen in many epidermal inflammatory diseases, including atopic dermatitis, mycosis fungoides, Darier's disease and inflammatory lichen sclerosus atrophicus. The high level of expression in active psoriatic lesions has prompted investigators to suggest that S100A7 may have a chemotactic role in psoriasis.

Product Description:

Full length of human S100A7, containing an N-terminal GST tag, expressed in *E. coli*.

Gene Information:

The gene accession number is NM_002963.

Gene Aliases:

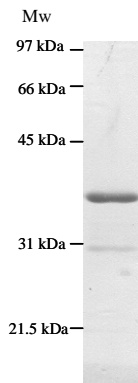
Psoriasin, PSOR1, BDA11, CAAF2

Formulation:

Supplied frozen in 2X phosphate buffered saline (2X PBS) containing 50 % glycerol.

Endotoxin Concentration:

< 0.01 EU/µg as determined by Limulus Amebocyte Lysate (LAL) assay

Molecular Weight:

The recombinant human S100A7 demonstrates approximately 34 kDa band by SDS-PAGE analysis.

Storage:

Store product at -70°C . For optimal storage, aliquot target into smaller quantities after centrifugation and store at recommended temperature. For most favorable performance, AVOID REPEATED HANDLING AND MULTIPLE FREEZE/THAW CYCLES.

Stability:

Unopened vial at -70°C , for 1 year after delivery.

References:

1. Madsen P, Rasmussen HH & Leffers H et al. *J Invest Dermatol* (1991) 97: 701–712.
2. Broome AM, Ryan D & Eckert RL. *J Histochem Cytochem* (2003) 51: 675–685.
3. Hitomi J, Yamaguchi K & Kikuchi Y et al. *J Cell Sci* (1996) 109: 805–815.
4. Katz AB & Taichman LB. *J Invest Dermatol* (1999) 112: 818–821.
5. Karimi-Busheri F, Marcoux Y & Tredget EE et al. *J Cell Biochem* (2002) 86: 737–747.
6. Hoffmann HJ, Olsen E & Etzerodt M et al. *J Invest Dermatol* (1994) 103: 370–375.
7. Jinquan T, Vorum H & Larsen CG et al. *J Invest Dermatol* (1996) 107: 5–10.
8. Algermissen B, Sitzmann J, LeMotte P & Czarnetzki B. *Arch Dermatol Res* (1996) 288: 426–430.

Related Products

- * CircuLex S100A13 ELISA Kit: Cat# CY-8057
- * CircuLex S100A12 ELISA Kit: Cat# CY-8058
- * CircuLex S100P ELISA Kit: Cat# CY-8060
- * CircuLex S100A8-MRP8 ELISA Kit: Cat# CY-8061
- * CircuLex S100A9-MRP14 ELISA Kit: Cat# CY-8062
- * CircuLex S100A11 ELISA Kit: Cat# CY-8063
- * CircuLex S100A14 ELISA Kit: Cat# CY-8064
- * CircuLex S100A7/Psoriasin ELISA Kit: Cat# CY-8073
- * CircuLex S100A4 ELISA Kit Ver.2: Cat# CY-8086

- * Anti-Human S100A3 (Clone YK-3E3): Cat# CY-M1039
- * Anti-Human S100A4 (p9Ka): Cat# CY-P1026
- * Anti-Human S100P: Cat# CY-P1028
- * Anti-Human S100A10: Cat# CY-P1033
- * Anti-Human S100A16: Cat# CY-P1034

- * Anti-Human S100A3: Cat# CY-P1039
- * Anti-Human S100A2: Cat# CY-P1040

- * Human S100B: Cat# CY-R2250
- * Human S100A1: Cat# CY-R2251
- * Human S100A2: Cat# CY-R2252
- * Human S100A3: Cat# CY-R2253
- * Human S100A4: Cat# CY-R2254
- * Human S100A5: Cat# CY-R2255
- * Human S100A6: Cat# CY-R2256
- * Human S100A7: Cat# CY-R2257
- * Human S100A8: Cat# CY-R2258
- * Human S100A9: Cat# CY-R2259-G
- * Human S100A9: Cat# CY-R2259-H
- * Human S100A10: Cat# CY-R2260
- * Human S100A12: Cat# CY-R2262-G
- * Human S100A12: Cat# CY-R2262-H
- * Human S100A13: Cat# CY-R2263
- * Human S100A14: Cat# CY-R2264
- * Human S100A16: Cat# CY-R2266
- * Human S100P: Cat# CY-R2267
- * Human S100A11: Cat# CY-R2269

- * Human S100A1 Low Endotoxin: Cat# CY-R2451
- * Human S100A3 Low Endotoxin: Cat# CY-R2453
- * Human S100A4 Low Endotoxin: Cat# CY-R2454
- * Human S100A7 Low Endotoxin: Cat# CY-R2457
- * Human S100A8 Low Endotoxin: Cat# CY-R2458
- * Human S100A9 Low Endotoxin: Cat# CY-R2459-G
- * Human S100A11 Low Endotoxin: Cat# CY-R2461
- * Human S100A12 Low Endotoxin: Cat# CY-R2462-G
- * Human S100A14 Low Endotoxin: Cat# CY-R2464
- * Human S100P Low Endotoxin: Cat# CY-R2467

PRODUCED BY

CycLex Co., Ltd.
1063-103 Terasawaoka
Ina, Nagano 396-0002
Japan
Fax: +81-265-76-7618
e-mail: info@cyclex.co.jp
URL: <http://www.cyclex.co.jp>

CycLex/CircuLex products are supplied for research use only. CycLex/CircuLex products and components thereof may not be resold, modified for resale, or used to manufacture commercial products without prior written approval from CycLex Co., Ltd.. To inquire about licensing for such commercial use, please contact us via email.