

## LDLR EGF-AB domain

(Human, recombinant protein expressed in *E.coli*.)

Cat# CY-R2340

Sterile condition  
Lot No.  
(500 µg/mL x 100 µL)

**Product Description:** PCSK9 binds to the LDL receptor *in vitro* through LDLR EGF-A domain. Human LDLR EGF-AB domain is expressed in *E.coli*. and purified by column chromatography. Binding capability of the LDLR EGF-AB domain to recombinant PCSK9 was confirmed by using CircuLex PCSK9-LDLR *in vitro* Binding Assay Kit (Cat# CY-8150). Unused LDLR EGF-AB domain should be stored at -70°C.

**Product Size:** 50 µg (500 µg/mL x 100 µL).

**Formulation:** The LDLR EGF-AB domain is supplied frozen in 20 mM sodium phosphate buffer pH 7.2, 290 mM NaCl and 10 % glycerol.

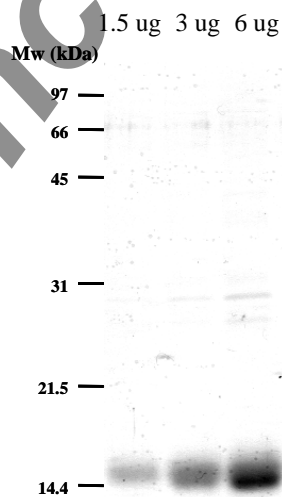
**Source:** Human LDLR EGF-AB domain, expressed in *E. coli*.

**Molecular Weight:** The LDLR EGF-AB domain demonstrates ~15 kDa by SDS-PAGE analysis.

**Purity:** The LDLR EGF-AB domain is greater than 90 % pure as determined by SDS-PAGE analysis.

**Storage and Stability:** Stable for 12 months at -70°C from date of shipment. Aliquot protein to avoid repeated freezing and thawing.

**Fig.1** SDS-PAGE analysis of the LDLR EGF-AB domain (CBB staining)



**General References:**

1. Seidah NG, Benjannet S, Wickham L, Marcinkiewicz J, Jasmin SB, Stifani S, Basak A, Prat A, Chretien M (2003) *Proc Natl Acad Sci USA* 100:928–933.
2. Abifadel M, Varret M, Rabes JP, Allard D, Ouguerram K, Devillers M, Cruaud C, Benjannet S, Wickham L, Erlich D, et al. (2003) *Nat Genet* 34:154–156.
3. Leren TP (2004) *Clin Genet* 65:419–422.
4. Allard D, Amsellem S, Abifadel M, Trillard M, Devillers M, Luc G, Krempf M, Reznik Y, Girardet JP, Fredenrich A, et al. (2005) *Hum Mutat* 26:497.
5. Cohen JC, Boerwinkle E, Mosley TH, Jr, Hobbs HH (2006) *N Engl J Med* 354, 1264–1272.
6. Berge KE, Ose L, Leren TP (2006) *Arterioscler Thromb Vasc Biol* 26:1094–1100.
7. Maxwell KN, Breslow JL (2004) *Proc Natl Acad Sci USA* 101:7100–7105.
8. Rashid S, Curtis DE, Garuti R, Anderson NN, Bashmakov Y, Ho YK, Hammer RE, Moon YA, Horton JD (2005) *Proc Natl Acad Sci USA* 102:5374–5379.
9. Lagace, T. A., Curtis, D. E., Garuti, R., McNutt, M. C., Park, S. W., Prather, H. B., Anderson, N. N., Ho, Y. K., Hammer, R. E., and Horton, J. D. (2006) *J. Clin. Investig.* 116, 2995–3005
10. Cameron, J., Holla, O. L., Ranheim, T., Kulseth, M. A., Berge, K. E., and Leren, T. P. (2006) *Hum. Mol. Genet.* 15, 1551–1558
11. Zhang, D. W., Lagace, T. A., Garuti, R., Zhao, Z., McDonald, M., Horton, J. D., Cohen, J. C., and Hobbs, H. H. (2007) *J. Biol. Chem.* 282, 18602–18612
12. Hyock Joo Kwon\*, Thomas A. Lagace†, Markey C. McNutt†, Jay D. Horton†‡, and Johann Deisenhofer (2008) *Proc Natl Acad Sci USA* 105: 1820–1825.
13. Matthew J. Bottomley et al. (2009) *J. Biol. Chem.*, Jan 2009; 284: 1313-1323.
14. McNutt MC, Kwon HJ, Chen C, Chen JR, Horton JD, Lagace TA. (2009) *J Biol Chem.* 2009 Feb 17. [Epub ahead of print]

**Related Products:**

- \* CircuLex Mouse/Rat PCSK9 ELISA Kit: Cat# CY-8078
- \* CircuLex Human PCSK9 ELISA Kit: Cat# CY-8079
- \* CircuLex PCSK9-LDLR in vitro Binding Assay Kit: Cat# CY-8150
- \* Anti-Human PCSK9 prodomain monoclonal antibody (KS-3C8): Cat# CY-M1032
- \* Anti-Human PCSK9 monoclonal antibody (KS-4H12): Cat# CY-M1033
- \* PCSK9 Wild Type in culture medium: Cat# CY-R2310
- \* PCSK9 Δ(33-53) / Wild Type in culture medium: Cat# CY-R2320
- \* PCSK9 D374Y in culture medium: Cat# CY-R2311
- \* PCSK9 Δ(33-53) / D374Y in culture medium: Cat# CY-R2321
- \* PCSK9 Wild Type/Δ53 in culture medium: Cat# CY-R2320
- \* PCSK9 Wild Type: Cat# CY-R2330
- \* PCSK9 D374Y: Cat# CY-R2331
- \* PCSK9 R194A: Cat# CY-R2333
- \* LDLR EGF-AB domain: Cat# CY-R2340
- \* LDLR EGF-AB domain, Myc-tagged: Cat# CY-R2341
- \* LDLR EGF-AB domain H306Y: Cat# CY-R2342
- \* LDLR EGF-AB domain H306Y, Myc-tagged: Cat# CY-R2343

**PRODUCED BY**

CycLex Co., Ltd.  
1063-103 Terasawaoka  
Ina, Nagano 396-0002  
Japan  
Fax: +81-265-76-7618  
e-mail: [info@cyclex.co.jp](mailto:info@cyclex.co.jp)  
URL: <http://www.cyclex.co.jp>

CycLex/CircuLex products are supplied for research use only. CycLex/CircuLex products and components thereof may not be resold, modified for resale, or used to manufacture commercial products without prior written approval from CycLex Co., Ltd.. To inquire about licensing for such commercial use, please contact us via email.