

Human soluble LOX-1/OLR1

Human, recombinant protein expressed in HEK293, Myc & His tagged

Cat# CY-R2271

Amount: 50 µg (0.25 µg/µl x 200µl)

Lot:

Introduction:

Lectin-like oxidized LDL receptor-1 (LOX-1), also called OLR1, a 52-kD type II transmembrane receptor for oxidized low-density lipoproteins (ox-LDL) belonging to the C-type lectin family is present primarily on endothelial cells (1). Accumulating evidences indicate that oxLDL uptake through this receptor induces endothelial dysfunction. oxLDL binding to endothelial LOX-1 generates superoxide anions, decreases nitric oxide production, and activates NF-kB (2, 3). Endothelial LOX-1 expression is induced by various pro-inflammatory cytokines, such as TNF-alpha (4) and TGF-beta (5) as well as by pro-atherogenic factors, such as oxLDL and advanced glycation end products in vitro (6). This receptor is expressed in the aortas of hypertensive, diabetic, and hyperlipidemic animals (6-8) and is upregulated in early human atherosclerotic lesions (9). These results suggest that LOX-1 may be expressed locally and play important roles in atherogenesis by internalizing and degrading oxLDL and in inflammatory responses in vivo. LOX-1 can be cleaved from the cell surface and released as soluble LOX-1 (sLOX-1), and elevated sLOX-1 levels may be indicative of atherosclerotic plaque instability (10).

Product Description:

Extracellular domain of human LOX-1/OLR1, containing an C-terminal Myc-tag and His-tag, expressed in HEK293 cells and purified by Ni-chelating chromatography.

Gene Information:

The gene accession number is NM_002543

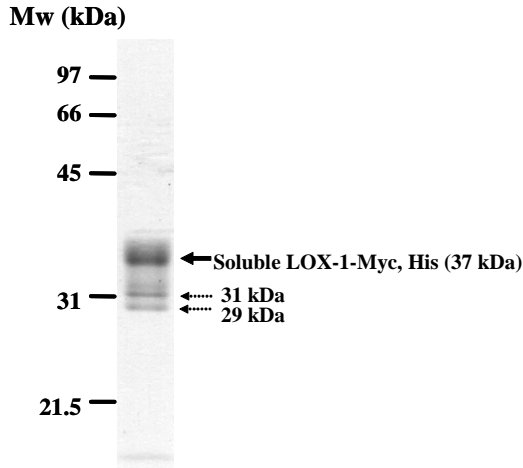
Gene Aliases:

OLR1 (oxidized low density lipoprotein (lectin-like) receptor 1)

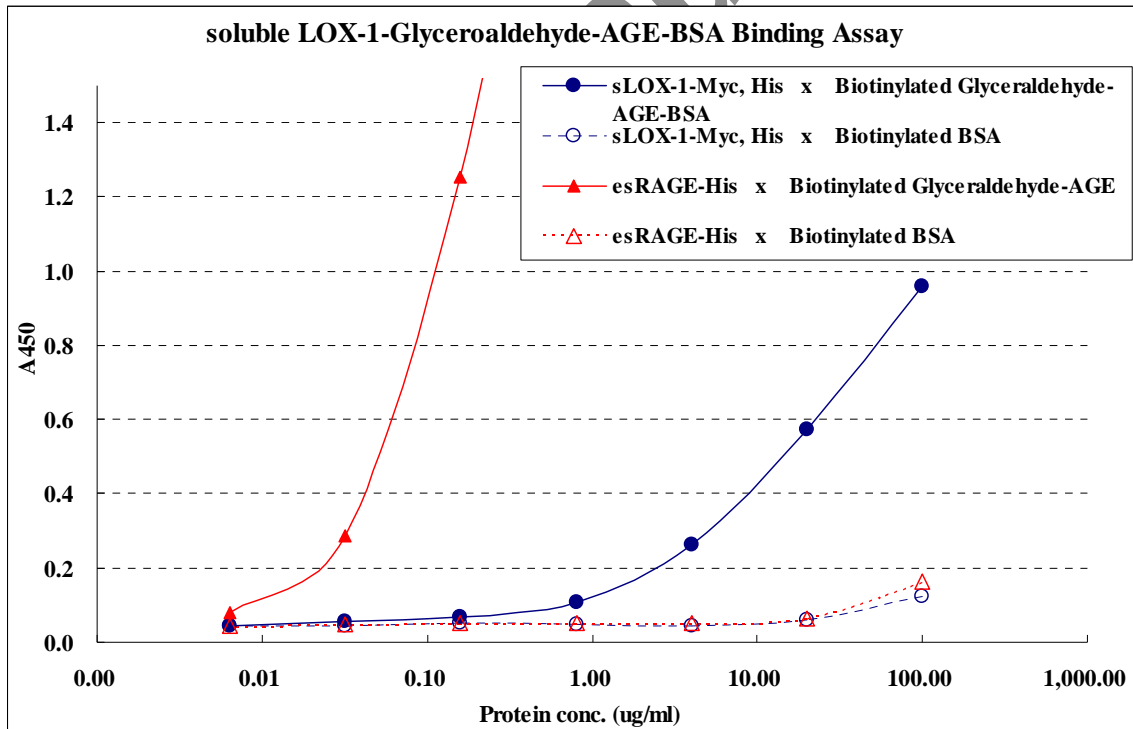
Formulation:

Recombinant human soluble LOX-1/soluble OLR1 is supplied frozen in phosphate buffered saline (PBS) containing 10 % glycerol.

Molecular Weight: 37 kDa



Soluble LOX-1-Myc, His tagged (recombinant human extracellular domain of LOX-1/OLR1) demonstrates approximately 37 kDa band with additional 31 and 29 kDa minor bands by SDS-PAGE analysis.



Storage:

Store product at -70°C. For optimal storage, aliquot target into smaller quantities after centrifugation and store at recommended temperature. For most favorable performance, AVOID REPEATED HANDLING AND MULTIPLE FREEZE/THAW CYCLES.

Stability:

Unopened vial at -70 °C, for 1 year after delivery.

References:

1. Sawamura T, Kume N, Aoyama T, Moriwaki H, Hoshikawa H, Aiba Y, Tanaka T, Miwa S, Katsura Y, Kita T, Masaki T. (1997) *Nature* 386: 73-77
2. Cominacini L, Pasini AF, Garbin U, Davoli A, Tosetti ML, Campagnola M, Rigoni A, Pastorino AM, Lo Cascio V, Sawamura T. (2000) *J Biol Chem.* 275: 12633–12638.
3. Cominacini L, Rigoni A, Pasini AF, Garbin U, Davoli A, Campagnola M, Pastorino AM, Lo Cascio U, Sawamura T. (2001) *J Biol Chem.* 276: 13750–13755.
4. Kume N, Murase T, Moriwaki H, Aoyama T, Sawamura T, Masaki T, Kita T. (1998) *Circ Res.* 83: 322–327.
5. Draude G and Lorenz R. L. (2000) *Am J Physiol Heart Circ Physiol.* 278: H1042–H1048.
6. Nagase M, Hirose S, Sawamura T, Masaki T, Fujita T. (1997) *Biochem Biophys Res Commun.* 237: 496–498.
7. Chen M, Nagase M, Fujita T, Narumiya S, Masaki T, Sawamura T. (2001) *Biochem Biophys Res Commun.* 287: 962–968.
8. Chen M, Kakutani M, Minami M, Kataoka H, Kume N, Narumiya S, Kita T, Sawamura T. (2000) *Arterioscler Thromb Vasc Biol.* 20: 1107–1115.
9. Kataoka H, Kume N, Miyamoto S, Minami M, Moriwaki H, Murase T, Sawamura T, Masaki T, Hashimoto N, Kita T. (1999) *Circulation* 99: 3110–3117.
10. Hayashida K, Kume N, Murase T, Minami M, Nakagawa D, Inada T, Tanaka M, Ueda A, Kominami G, Kambara H, Kimura T, Kita T. (2005) *Circulation* 112: 812-818.

Related Products

- * CD5L/Spa ELISA Kit: Cat# CY-8080
- * S100A12/EN-RAGE ELISA Kit: Cat# CY-8058
- * Anti-Human Spa/CD5L (Lymphocyte antigen CD5-like): Cat# CY-P1036

PRODUCED BY

CycLex Co., Ltd.
1063-103 Terasawaoka
Ina, Nagano 396-0002
Japan
Fax: +81-265-76-7618
e-mail: info@cyclex.co.jp
URL: <http://www.cyclex.co.jp>

CycLex/CircuLex products are supplied for research use only. CycLex/CircuLex products and components thereof may not be resold, modified for resale, or used to manufacture commercial products without prior written approval from CycLex Co., Ltd.. To inquire about licensing for such commercial use, please contact us via email.