

Human AIM/CD5L/Spα
Human, His-tagged recombinant protein expressed in HEK 293 cells
Sterilized
Cat# CY-R2270

Amount: 50 µg (0.2 µg/µl x 250 µl)

Lot:

Introduction:

AIM/CD5L/Spα binds to the LPS and LTA *in vitro* as well as IgM *in vivo*.

Product Description:

Human AIM/CD5L/Spα containing a C-terminal His-tag, expressed in HEK 293 cells. Purified by Ni-chelating chromatography. Unused human AIM/CD5L/Spα should be stored at -70°C.

Gene Information:

The gene accession number is NM_005894

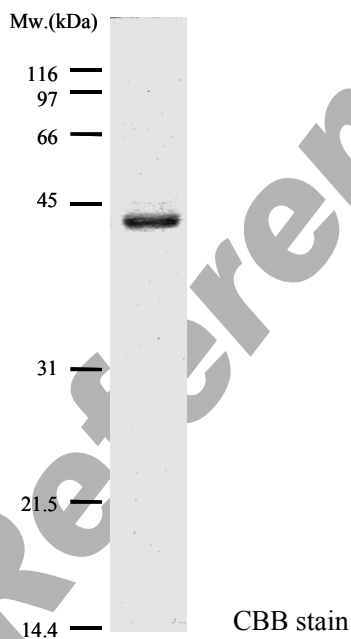
Formulation:

The human AIM/CD5L/Spα is supplied frozen in PBS pH 7.2, 10 %glycerol.

Purity:

The human AIM/CD5L/Spα is greater than 95 % pure as determined by SDS-PAGE analysis.

Molecular Weight:



The human AIM/CD5L/Spα demonstrates 43 kDa by SDS-PAGE analysis.

For Research Use Only, Not for use in diagnostic procedures**Storage:**

Store product at -70°C. For optimal storage, aliquot target into smaller quantities after centrifugation and store at recommended temperature. For most favorable performance, AVOID REPEATED HANDLING AND MULTIPLE FREEZE/THAW CYCLES.

Stability:

Unopened vial at -70 °C, for 1 year after delivery.

General References:

1. Sarrias MR, Roselló S, Sánchez-Barbero F, Sierra JM, Vila J, Yélamos J, Vives J, Casals C, Lozano F.; A role for human Sp alpha as a pattern recognition receptor. *J Biol Chem.* 280: 35391-8, 2005
2. JA Gebe, M Llewellyn, H Hoggatt, and A Aruffo; Molecular cloning, genomic organization and cell-binding characteristics of mouse Spalpha. *Immunology* 99: 78-86, 2000
3. John A. Gebe, Peter A. Kiener, Huijun Z. Ring, Xu Li, Uta Francke, and Alejandro Aruffo; Molecular Cloning, Mapping to Human Chromosome 1q21-q23, and Cell Binding Characteristics of Spalpha , a New Member of the Scavenger Receptor Cysteine-rich (SRCR) Family of Proteins *J. Biol. Chem.* 272: 6151, 1997
4. Toru Miyazaki, Yumiko Hirokami, Nobuyuki Matsushashi, Hisakazu Takatsuka, and Makoto Naito; Increased Susceptibility of Thymocytes to Apoptosis in Mice Lacking AIM, a Novel Murine Macrophage-derived Soluble Factor Belonging to the Scavenger Receptor Cysteine-rich Domain Superfamily *J. Exp. Med.* 189: 413, 1999
5. Kazuhisa Kuwata, Hisami Watanabe, Shu-Ying Jiang, Takashi Yamamoto, Chikako Tomiyama-Miyaji, Toru Abo, Toru Miyazaki, and Makoto Naito; AIM Inhibits Apoptosis of T Cells and NKT Cells in Corynebacterium-Induced Granuloma Formation in Mice *Am. J. Pathol.* 162: 837 -847, 2003
6. Ikuko Haruta, Yoichiro Kato, Etsuko Hashimoto, Christina Minjares, Shawna Kennedy, Hirofumi Uto, Katsumi Yamauchi, Makio Kobayashi, Sei-ichi Yusa, Urs Müller, Naoaki Hayashi, and Toru Miyazaki; Association of AIM, a Novel Apoptosis Inhibitory Factor, with Hepatitis via Supporting Macrophage Survival and Enhancing Phagocytotic Function of Macrophages *J. Biol. Chem.*, 276: 22910-22914, 2001
7. Sarrias MR, Padilla O, Monreal Y, Carrascal M, Abian J, Vives J, Yélamos J, Lozano F.; Biochemical characterization of recombinant and circulating human Spalpha. *Tissue Antigens.* 63: 335-44, 2004
8. Tissot JD, Sanchez JC, Vuadens F, Scherl A, Schifferli JA, Hochstrasser DF, Schneider P, Duchosal MA.; IgM are associated to Sp alpha (CD5 antigen-like). *Electrophoresis.* 23:1203-6, 2002

Related Products

- * CircuLex Mouse AIM/CD5L/Spα ELISA Kit : Cat# CY-8075
- * CircuLex Human AIM/CD5L/Spα ELISA Kit : Cat# CY-8080
- * Anti-Human AIM/CD5L/Spα polyclonal antibody : Cat# CY-P1036
- * Human AIM/CD5L/Spα : Cat# CY-R2270

PRODUCED BY

CycLex Co., Ltd.
1063-103 Terasawaoka
Ina, Nagano 396-0002
Japan
Fax: +81-265-76-7618
e-mail: info@cyclex.co.jp
URL: <http://www.cyclex.co.jp>

CycLex/CircuLex products are supplied for research use only. CycLex/CircuLex products and components thereof may not be resold, modified for resale, or used to manufacture commercial products without prior written approval from CycLex Co., Ltd. To inquire about licensing for such commercial use, please contact us via email.