

Human S100A11
Human, recombinant protein expressed in *E. coli*.

Cat# CY-R2269

Amount: 100 µg (1.0 µg/µl)

Lot:

Introduction:

The S100 proteins comprise a family of 25 small acidic proteins (9–13 kDa) that are characterized by the presence of two calcium-binding EF-hand motifs (1, 2). Among the different human S100 genes, 22 are clustered at chromosome locus 1q21 (3), a region frequently involved in chromosomal rearrangement in cancers (4–6). Thirteen S100 proteins (S100A2, S100A3, S100A4, S100A6, S100A7, S100A8, S100A9, S100A10, S100A11, S100A12, S100A15, S100B, and S100P) are expressed in normal and/or diseased epidermis.

S100A11 (S100C, calgizzarin) is a member of the S100 family proteins, which is expressed in smooth muscle and other tissues. It is also localized in the cytoplasm in resting cells and moves to the cell periphery in cultured epidermal keratinocytes following calcium challenge. This movement requires the presence of intact microtubules. S100A11 was shown to bind to annexin A1 and the S100A11/annexin I complex is a heterotetramer consisting of two S100A11 and two annexin I proteins. Ca²⁺ binding to S100A11 induces a conformational change that exposes a hydrophobic surface for interaction with target proteins. S100A11 was also shown to interact with annexin A6 in Ca²⁺-dependent manner.

Product Description:

Full length of human S100A11, containing an N-terminal GST tag, expressed in *E. coli*. and purified by GSH agarose chromatography.

Gene Information:

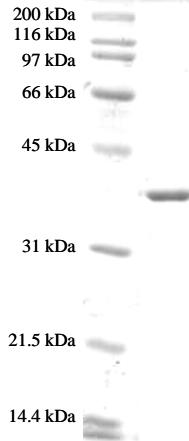
The gene accession number is NM_005620.

Gene Aliases:

S100C, Calgizzarin

Formulation:

Recombinant human S100A11 is supplied frozen in phosphate buffered saline (PBS) containing 50 % glycerol.

For Research Use Only, Not for use in diagnostic procedures**Molecular Weight:** 38 kDa

Recombinant human S100A16 demonstrates approximately 38 kDa band by SDS-PAGE analysis.

Storage:

Store product at -70°C. For optimal storage, aliquot target into smaller quantities after centrifugation and store at recommended temperature. For most favorable performance, AVOID REPEATED HANDLING AND MULTIPLE FREEZE/THAW CYCLES.

Stability:

Unopened vial at -70 °C, for 1 year after delivery.

References:

1. Marenholz, I., and Heizmann, C. W. *Biochem. Biophys. Res. Commun.* (2004) 313, 237–244
2. Sturchler E, Cox JA, Durussel I, Weibel M, Heizmann CW. *J Biol Chem.* (2006) 281, 38905-38917.
3. Reddy PH, Stockburger E, Gillevet P, Tagle DA. *Genomics.* (1997) 46, 174-182.

Related Products

- * CircuLex S100A13 ELISA Kit: Cat# CY-8057
- * CircuLex S100A12 ELISA Kit: Cat# CY-8058
- * CircuLex S100P ELISA Kit: Cat# CY-8060
- * CircuLex S100A8-MRP8 ELISA Kit: Cat# CY-8061
- * CircuLex S100A9-MRP14 ELISA Kit: Cat# CY-8062
- * CircuLex S100A11 ELISA Kit: Cat# CY-8063
- * CircuLex S100A14 ELISA Kit: Cat# CY-8064
- * CircuLex S100A7/Psoriasin ELISA Kit: Cat# CY-8073
- * CircuLex S100A4 ELISA Kit Ver.2: Cat# CY-8086

- * Anti-Human S100A3 (Clone YK-3E3): Cat# CY-M1039
- * Anti-Human S100A4 (p9Ka): Cat# CY-P1026
- * Anti-Human S100P: Cat# CY-P1028
- * Anti-Human S100A10: Cat# CY-P1033
- * Anti-Human S100A16: Cat# CY-P1034
- * Anti-Human S100A3: Cat# CY-P1039

For Research Use Only, Not for use in diagnostic procedures

- * **Anti-Human S100A2: Cat# CY-P1040**

- * **Human S100B: Cat# CY-R2250**
- * **Human S100A1: Cat# CY-R2251**
- * **Human S100A2: Cat# CY-R2252**
- * **Human S100A3: Cat# CY-R2253**
- * **Human S100A4: Cat# CY-R2254**
- * **Human S100A5: Cat# CY-R2255**
- * **Human S100A6: Cat# CY-R2256**
- * **Human S100A7: Cat# CY-R2257**
- * **Human S100A8: Cat# CY-R2258**
- * **Human S100A9: Cat# CY-R2259-G**
- * **Human S100A9: Cat# CY-R2259-H**
- * **Human S100A10: Cat# CY-R2260**
- * **Human S100A12: Cat# CY-R2262-G**
- * **Human S100A12: Cat# CY-R2262-H**
- * **Human S100A13: Cat# CY-R2263**
- * **Human S100A14: Cat# CY-R2264**
- * **Human S100A16: Cat# CY-R2266**
- * **Human S100P: Cat# CY-R2267**
- * **Human S100A11: Cat# CY-R2269**

- * **Human S100A1 Low Endotoxin: Cat# CY-R2451**
- * **Human S100A3 Low Endotoxin: Cat# CY-R2453**
- * **Human S100A4 Low Endotoxin: Cat# CY-R2454**
- * **Human S100A7 Low Endotoxin: Cat# CY-R2457**
- * **Human S100A8 Low Endotoxin: Cat# CY-R2458**
- * **Human S100A9 Low Endotoxin: Cat# CY-R2459-G**
- * **Human S100A11 Low Endotoxin: Cat# CY-R2461**
- * **Human S100A12 Low Endotoxin: Cat# CY-R2462-G**
- * **Human S100A14 Low Endotoxin: Cat# CY-R2464**
- * **Human S100P Low Endotoxin: Cat# CY-R2467**

PRODUCED BY

CycLex Co., Ltd.
1063-103 Terasawaoka
Ina, Nagano 396-0002
Japan
Fax: +81-265-76-7618
e-mail: info@cyclex.co.jp
URL: <http://www.cyclex.co.jp>

CycLex/CircuLex products are supplied for research use only. CycLex/CircuLex products and components thereof may not be resold, modified for resale, or used to manufacture commercial products without prior written approval from CycLex Co., Ltd.. To inquire about licensing for such commercial use, please contact us via email.