

For Research Use Only, Not for use in diagnostic procedures

# Human S100A16

## Human, recombinant protein expressed in *E. coli*.

Cat# CY-R2266

Amount: 100 µg (1.0 µg/µl)  
Lot:**Introduction:**

The S100 proteins comprise a family of 25 small acidic proteins (9–13 kDa) that are characterized by the presence of two calcium-binding EF-hand motifs (1, 2). Among the different human S100 genes, 22 are clustered at chromosome locus 1q21 (3), a region frequently involved in chromosomal rearrangement in cancers (4–6). Thirteen S100 proteins (S100A2, S100A3, S100A4, S100A6, S100A7, S100A8, S100A9, S100A10, S100A11, S100A12, S100A15, S100B, and S100P) are expressed in normal and/or diseased epidermis.

S100A16 is a newly discovered member of a large S100 family. It shares homology with S100A7, S100A13, and S100A14 genes that had been identified on the microarrays as potential circulating tumor cells markers and has minimal expression in leukocytes (7). Up-regulation of S100A16 was found in many tumors implying a central cellular function related to malignant transformation (2). S100A16 has previously been reported in a wide spectrum of adult human tissues including brain (2). S100A16 is widely distributed throughout the adult mouse brain and predominantly expressed within specific astrocyte populations (8). CAG repeats were identified in the transcribed region, which might be associated with diseases of the nervous system (9). The protein was found to accumulate within nucleoli and to translocate to the cytoplasm in response to Ca<sup>2+</sup> stimulation (8).

**Product Description:**

Full length of human S100A16, containing an N-terminal GST tag, expressed in *E. coli*. and purified by GSH agarose chromatography.

**Gene Information:**

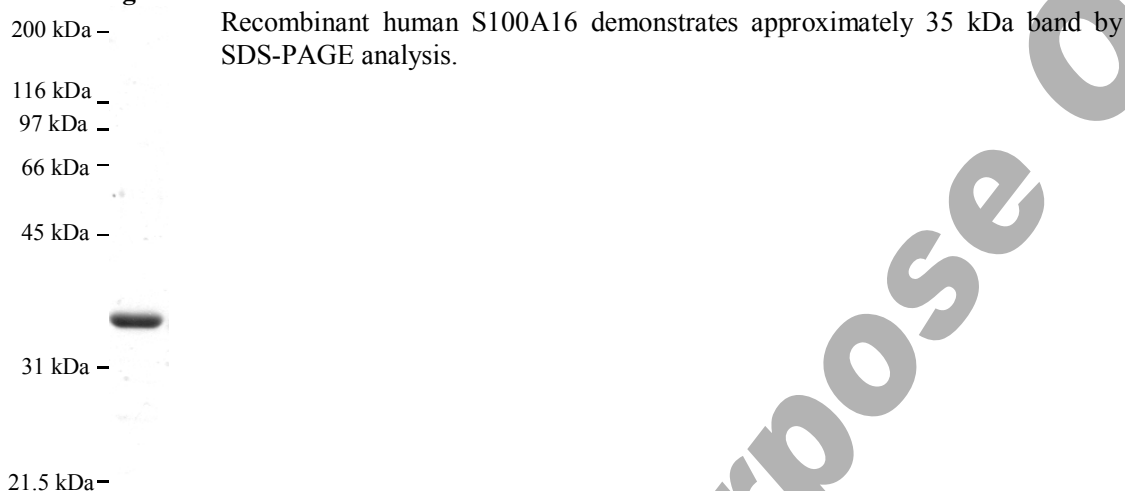
The gene accession number is NM\_080388.

**Gene Aliases:**

S100F, DT1PA7a, HGC17528

**Formulation:**

Recombinant human S100A16 is supplied frozen in phosphate buffered saline (PBS) containing 50 % glycerol.

**For Research Use Only, Not for use in diagnostic procedures****Molecular Weight: 35 kDa****Storage:**

Store product at -70°C. For optimal storage, aliquot target into smaller quantities after centrifugation and store at recommended temperature. For most favorable performance, AVOID REPEATED HANDLING AND MULTIPLE FREEZE/THAW CYCLES.

**Stability:**

Unopened vial at -70 °C, for 1 year after delivery.

**References:**

1. Marenholz, I., and Heizmann, C. W. *Biochem. Biophys. Res. Commun.* (2004) 313, 237–244
2. Sturchler E, Cox JA, Durussel I, Weibel M, Heizmann CW. *J Biol Chem.* (2006) 281, 38905-38917.
3. Reddy PH, Stockburger E, Gillevet P, Tagle DA. *Genomics.* (1997) 46, 174-182.

**Related Products**

- \* CircuLex S100A13 ELISA Kit: Cat# CY-8057
- \* CircuLex S100A12 ELISA Kit: Cat# CY-8058
- \* CircuLex S100P ELISA Kit: Cat# CY-8060
- \* CircuLex S100A8-MRP8 ELISA Kit: Cat# CY-8061
- \* CircuLex S100A9-MRP14 ELISA Kit: Cat# CY-8062
- \* CircuLex S100A11 ELISA Kit: Cat# CY-8063
- \* CircuLex S100A14 ELISA Kit: Cat# CY-8064
- \* CircuLex S100A7/Psoriasin ELISA Kit: Cat# CY-8073
- \* CircuLex S100A4 ELISA Kit Ver.2: Cat# CY-8086
  
- \* Anti-Human S100A3 (Clone YK-3E3): Cat# CY-M1039
- \* Anti-Human S100A4 (p9Ka): Cat# CY-P1026
- \* Anti-Human S100P: Cat# CY-P1028
- \* Anti-Human S100A10: Cat# CY-P1033
- \* Anti-Human S100A16: Cat# CY-P1034

**For Research Use Only, Not for use in diagnostic procedures**

- \* **Anti-Human S100A3: Cat# CY-P1039**
- \* **Anti-Human S100A2: Cat# CY-P1040**
  
- \* **Human S100B: Cat# CY-R2250**
- \* **Human S100A1: Cat# CY-R2251**
- \* **Human S100A2: Cat# CY-R2252**
- \* **Human S100A3: Cat# CY-R2253**
- \* **Human S100A4: Cat# CY-R2254**
- \* **Human S100A5: Cat# CY-R2255**
- \* **Human S100A6: Cat# CY-R2256**
- \* **Human S100A7: Cat# CY-R2257**
- \* **Human S100A8: Cat# CY-R2258**
- \* **Human S100A9: Cat# CY-R2259-G**
- \* **Human S100A9: Cat# CY-R2259-H**
- \* **Human S100A10: Cat# CY-R2260**
- \* **Human S100A12: Cat# CY-R2262-G**
- \* **Human S100A12: Cat# CY-R2262-H**
- \* **Human S100A13: Cat# CY-R2263**
- \* **Human S100A14: Cat# CY-R2264**
- \* **Human S100A16: Cat# CY-R2266**
- \* **Human S100P: Cat# CY-R2267**
- \* **Human S100A11: Cat# CY-R2269**
  
- \* **Human S100A1 Low Endotoxin: Cat# CY-R2451**
- \* **Human S100A3 Low Endotoxin: Cat# CY-R2453**
- \* **Human S100A4 Low Endotoxin: Cat# CY-R2454**
- \* **Human S100A7 Low Endotoxin: Cat# CY-R2457**
- \* **Human S100A8 Low Endotoxin: Cat# CY-R2458**
- \* **Human S100A9 Low Endotoxin: Cat# CY-R2459-G**
- \* **Human S100A11 Low Endotoxin: Cat# CY-R2461**
- \* **Human S100A12 Low Endotoxin: Cat# CY-R2462-G**
- \* **Human S100A14 Low Endotoxin: Cat# CY-R2464**
- \* **Human S100P Low Endotoxin: Cat# CY-R2467**

**PRODUCED BY**

CycLex Co., Ltd.  
1063-103 Terasawaoka  
Ina, Nagano 396-0002  
Japan  
Fax: +81-265-76-7618  
e-mail: [info@cyclex.co.jp](mailto:info@cyclex.co.jp)  
URL: <http://www.cyclex.co.jp>

CycLex/CircuLex products are supplied for research use only. CycLex/CircuLex products and components thereof may not be resold, modified for resale, or used to manufacture commercial products without prior written approval from CycLex Co., Ltd.. To inquire about licensing for such commercial use, please contact us via email.