

For Research Use Only, Not for use in diagnostic procedures

Human S100A14

Human, recombinant protein expressed in *E. coli*.

Cat# CY-R2264

Amount: 100 µg (1.0 µg/µl)
Lot:**Introduction:**

S100 proteins form a growing subfamily of proteins related by Ca²⁺-binding motifs to the Efhand Ca²⁺-binding protein superfamily. By analyzing a human lung cancer cell line subtraction cDNA library, cDNA of S100A14 was isolated. The full-length cDNA of S100A14 is 1067 bp and encodes a putative protein of 104 amino acids. The predicted protein contains the S100-specific EF-hand calcium-binding domain and shares the highest sequence homology to S100A13. The gene is ubiquitously expressed in normal human tissues of epithelial origin, with the highest expression in colon. S100A14 transcript was found to be down-regulated in many immortalized and tumour cell lines from diverse tissues. In contrast to the tumour cell lines, S100A14 shows up-regulation at the mRNA and protein level in many human primary tumours, including lung and breast carcinomas. S100A14 protein localizes predominately to the plasma membrane and the cytoplasm.

Product Description:

Full length of human S100A14, containing an N-terminal GST tag, expressed in *E. coli*. and purified by GSH agarose chromatography.

Gene Information:

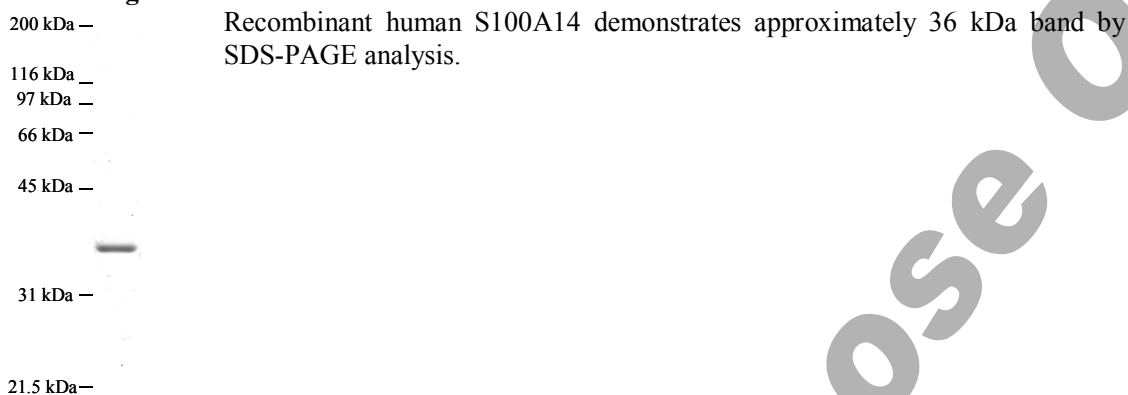
The gene accession number is NM_020672.

Gene Aliases:

BCMP84

Formulation:

Recombinant human S100A14 is supplied frozen in phosphate buffered saline (PBS) containing 50 % glycerol.

For Research Use Only, Not for use in diagnostic procedures**Molecular Weight:** 36 kDa**Storage:**

Store product at -70°C. For optimal storage, aliquot target into smaller quantities after centrifugation and store at recommended temperature. For most favorable performance, AVOID REPEATED HANDLING AND MULTIPLE FREEZE/THAW CYCLES.

Stability:

Unopened vial at -70 °C, for 1 year after delivery.

References:

1. Adam, P. J.; Boyd, R.; Tyson, K. L.; Fletcher, G. C.; Stamps, A.; Hudson, L.; Poyser, H. R.; Redpath, N.; Griffiths, M.; Steers, G.; Harris, A. L.; Patel, S.; Berry, J.; Loader, J. A.; Townsend, R. R.; Daviet, L.; Legrain, P.; Parekh, R.; Terrett, J. A.; Comprehensive proteomic analysis of breast cancer cell membranes reveals unique proteins with potential roles in clinical cancer. *J. Biol. Chem.* 278: 6482-6489, 2003.
2. Pietas, A.; Schluns, K.; Marenholz, I.; Schafer, B. W.; Heizmann, C. W.; Petersen, I.; Molecular cloning and characterization of the human S100A14 gene encoding a novel member of the S100 family. *Genomics* 79: 513-522, 2002.

Related Products

- * CircuLex S100A13 ELISA Kit: Cat# CY-8057
- * CircuLex S100A12 ELISA Kit: Cat# CY-8058
- * CircuLex S100P ELISA Kit: Cat# CY-8060
- * CircuLex S100A8-MRP8 ELISA Kit: Cat# CY-8061
- * CircuLex S100A9-MRP14 ELISA Kit: Cat# CY-8062
- * CircuLex S100A11 ELISA Kit: Cat# CY-8063
- * CircuLex S100A14 ELISA Kit: Cat# CY-8064
- * CircuLex S100A7/Psoriasin ELISA Kit: Cat# CY-8073
- * CircuLex S100A4 ELISA Kit Ver.2: Cat# CY-8086
- * Anti-Human S100A3 (Clone YK-3E3): Cat# CY-M1039
- * Anti-Human S100A4 (p9Ka): Cat# CY-P1026
- * Anti-Human S100P: Cat# CY-P1028
- * Anti-Human S100A10: Cat# CY-P1033

For Research Use Only, Not for use in diagnostic procedures

- * **Anti-Human S100A16: Cat# CY-P1034**
- * **Anti-Human S100A3: Cat# CY-P1039**
- * **Anti-Human S100A2: Cat# CY-P1040**

- * **Human S100B: Cat# CY-R2250**
- * **Human S100A1: Cat# CY-R2251**
- * **Human S100A2: Cat# CY-R2252**
- * **Human S100A3: Cat# CY-R2253**
- * **Human S100A4: Cat# CY-R2254**
- * **Human S100A5: Cat# CY-R2255**
- * **Human S100A6: Cat# CY-R2256**
- * **Human S100A7: Cat# CY-R2257**
- * **Human S100A8: Cat# CY-R2258**
- * **Human S100A9: Cat# CY-R2259-G**
- * **Human S100A9: Cat# CY-R2259-H**
- * **Human S100A10: Cat# CY-R2260**
- * **Human S100A12: Cat# CY-R2262-G**
- * **Human S100A12: Cat# CY-R2262-H**
- * **Human S100A13: Cat# CY-R2263**
- * **Human S100A14: Cat# CY-R2264**
- * **Human S100A16: Cat# CY-R2266**
- * **Human S100P: Cat# CY-R2267**
- * **Human S100A11: Cat# CY-R2269**

- * **Human S100A1 Low Endotoxin: Cat# CY-R2451**
- * **Human S100A3 Low Endotoxin: Cat# CY-R2453**
- * **Human S100A4 Low Endotoxin: Cat# CY-R2454**
- * **Human S100A7 Low Endotoxin: Cat# CY-R2457**
- * **Human S100A8 Low Endotoxin: Cat# CY-R2458**
- * **Human S100A9 Low Endotoxin: Cat# CY-R2459-G**
- * **Human S100A11 Low Endotoxin: Cat# CY-R2461**
- * **Human S100A12 Low Endotoxin: Cat# CY-R2462-G**
- * **Human S100A14 Low Endotoxin: Cat# CY-R2464**
- * **Human S100P Low Endotoxin: Cat# CY-R2467**

PRODUCED BY

CycLex Co., Ltd.
1063-103 Terasawaoka
Ina, Nagano 396-0002
Japan
Fax: +81-265-76-7618
e-mail: info@cyclex.co.jp
URL: <http://www.cyclex.co.jp>

CycLex/CircuLex products are supplied for research use only. CycLex/CircuLex products and components thereof may not be resold, modified for resale, or used to manufacture commercial products without prior written approval from CycLex Co., Ltd.. To inquire about licensing for such commercial use, please contact us via email.