

For Research Use Only, Not for use in diagnostic procedures

Human S100A6

Human, recombinant protein expressed in *E. coli*.

Cat# CY-R2256

Amount: 100 µg (1.0 µg/µl)

Lot:

Introduction:

S100A6 (Calcyclin), a small acidic protein that molecular weighs about 10 kDa, belongs to the S100 calcium-binding protein family. These family members share a common S100 calcium-binding motif and are involved in several regulatory functions that include protein phosphorylation, some enzyme activities, the dynamics of cytoskeletal components, transcription factors, and Ca^{2+} homeostasis, and also cell proliferation and differentiation. An interesting feature of the S100 proteins is that they are expressed by epithelial cells and fibroblasts in a cell-specific way. S100A6 is also expressed by osteoblasts (MC3T3-E1 cells) and up-regulated markedly during osteoblast differentiation; however, its roles in bone physiology are unknown.

The general function of S100A6 remains unclear, but evidence suggests that it is involved in cell cycle regulation and exocytosis. S100A6 may also be involved in tumorigenesis; the protein is overexpressed in several tumors, e.g. melanoma.

Product Description:

Full length of human S100A6, containing an N-terminal GST tag, expressed in *E. coli*. and purified by GSH agarose chromatography.

Gene Information:

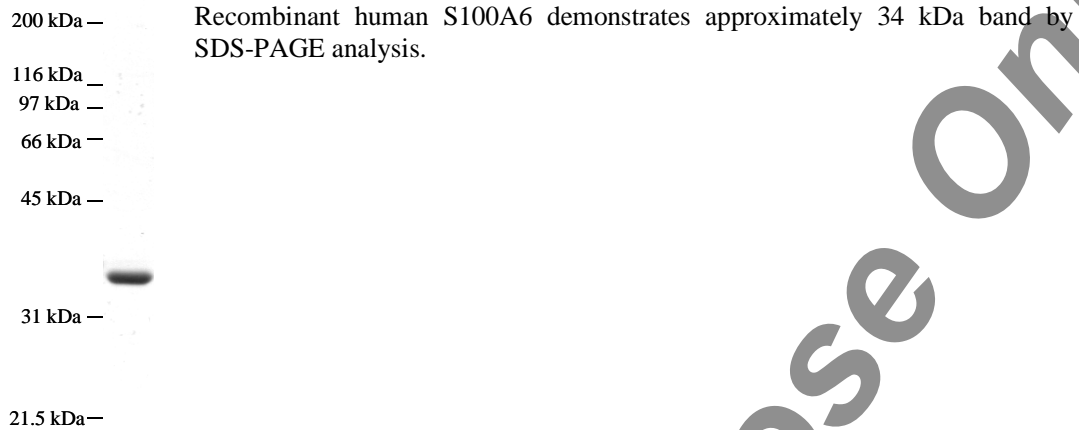
The gene accession number is NM_014624.

Gene Aliases:

Calcyclin, CACY, 2A9,PRA, CaBP, 5B10

Formulation:

Recombinant human S100A6 is supplied frozen in phosphate buffered saline (PBS) containing 50 % glycerol.

For Research Use Only, Not for use in diagnostic procedures**Molecular Weight:** 34 kDa**Storage:**

Store product at -70°C. For optimal storage, aliquot target into smaller quantities after centrifugation and store at recommended temperature. For most favorable performance, AVOID REPEATED HANDLING AND MULTIPLE FREEZE/THAW CYCLES.

Stability:

Unopened vial at -70 °C, for 1 year after delivery.

References:

1. Calabretta, B., Battini, R., Kaczmarek, L., de Riel, J. K., and Baserga, R. (1986) *J. Biol. Chem.* 261, 12628–12632
2. Calabretta, B., Venturelli, D., Kaczmarek, L., Narni, F., Talpaz, M., Anderson, B., Beran, M., and Baserga, R. (1986) *Proc. Natl. Acad. Sci. U. S. A.* 83, 1495–1498
3. Weterman, M. A., Stoopan, G. M., van Muijen, G. N., Kuznicki, J., Ruiters, D. J., and Bloemers, H. P. (1992) *Cancer Res.* 52, 1291–1296

Related Products

- * CircuLex S100A13 ELISA Kit: Cat# CY-8057
- * CircuLex S100A12 ELISA Kit: Cat# CY-8058
- * CircuLex S100P ELISA Kit: Cat# CY-8060
- * CircuLex S100A8-MRP8 ELISA Kit: Cat# CY-8061
- * CircuLex S100A9-MRP14 ELISA Kit: Cat# CY-8062
- * CircuLex S100A11 ELISA Kit: Cat# CY-8063
- * CircuLex S100A14 ELISA Kit: Cat# CY-8064
- * CircuLex S100A7/Psoriasin ELISA Kit: Cat# CY-8073
- * CircuLex S100A4 ELISA Kit Ver.2: Cat# CY-8086

- * Anti-Human S100A3 (Clone YK-3E3): Cat# CY-M1039
- * Anti-Human S100A4 (p9Ka): Cat# CY-P1026
- * Anti-Human S100P: Cat# CY-P1028
- * Anti-Human S100A10: Cat# CY-P1033
- * Anti-Human S100A16: Cat# CY-P1034

For Research Use Only, Not for use in diagnostic procedures

- * Anti-Human S100A3: Cat# CY-P1039
- * Anti-Human S100A2: Cat# CY-P1040

- * Human S100B: Cat# CY-R2250
- * Human S100A1: Cat# CY-R2251
- * Human S100A2: Cat# CY-R2252
- * Human S100A3: Cat# CY-R2253
- * Human S100A4: Cat# CY-R2254
- * Human S100A5: Cat# CY-R2255
- * Human S100A6: Cat# CY-R2256
- * Human S100A7: Cat# CY-R2257
- * Human S100A8: Cat# CY-R2258
- * Human S100A9: Cat# CY-R2259-G
- * Human S100A9: Cat# CY-R2259-H
- * Human S100A10: Cat# CY-R2260
- * Human S100A12: Cat# CY-R2262-G
- * Human S100A12: Cat# CY-R2262-H
- * Human S100A13: Cat# CY-R2263
- * Human S100A14: Cat# CY-R2264
- * Human S100A16: Cat# CY-R2266
- * Human S100P: Cat# CY-R2267
- * Human S100A11: Cat# CY-R2269

- * Human S100A1 Low Endotoxin: Cat# CY-R2451
- * Human S100A3 Low Endotoxin: Cat# CY-R2453
- * Human S100A4 Low Endotoxin: Cat# CY-R2454
- * Human S100A7 Low Endotoxin: Cat# CY-R2457
- * Human S100A8 Low Endotoxin: Cat# CY-R2458
- * Human S100A9 Low Endotoxin: Cat# CY-R2459-G
- * Human S100A11 Low Endotoxin: Cat# CY-R2461
- * Human S100A12 Low Endotoxin: Cat# CY-R2462-G
- * Human S100A14 Low Endotoxin: Cat# CY-R2464
- * Human S100P Low Endotoxin: Cat# CY-R2467

PRODUCED BY

CycLex Co., Ltd.
1063-103 Terasawaoka
Ina, Nagano 396-0002
Japan
Fax: +81-265-76-7618
e-mail: info@cyclex.co.jp
URL: <http://www.cyclex.co.jp>

CycLex/CircuLex products are supplied for research use only. CycLex/CircuLex products and components thereof may not be resold, modified for resale, or used to manufacture commercial products without prior written approval from CycLex Co., Ltd.. To inquire about licensing for such commercial use, please contact us via email.