

Human S100A4

Human, recombinant protein expressed in *E. coli*.

Cat# CY-R2254

Amount: 100 µg (1.0 µg/µl)
Lot:

Introduction:

Members of the S100 protein family are low molecular mass acidic proteins characterized by cell-type-specific expression and the presence of 2 EF-hand calcium-binding domains with different affinities for calcium. Elevated levels of one S100 protein, S100A4, are closely associated with the process of metastasis in breast and other cancer cells in rodent animal models and in human cancer specimens. S100A4 or its mRNA is found at an elevated level in metastatic relative to non-metastatic rat (1) and mouse (2) tumor cell lines and malignant relative to benign human breast tumors. Elevation of the level of rat (3) or human (4) S100A4 in benign rat mammary tumor cells results in the acquisition of metastatic capability by some of the cells. In transgenic mouse models of breast cancer, elevated levels of S100A4 in neu oncogene-induced, or in murine mammary tumor virus-induced, benign mammary tumors yield lung metastases. In colorectal adenocarcinoma specimens, elevated levels of immunocytochemically detected S100A4 are associated with the more malignant carcinomatous regions of the primary tumors and with liver metastases.

Product Description:

Full length of human S100A4, containing an N-terminal GST tag, expressed in *E. coli*. and purified by GSH agarose chromatography.

Gene Information:

The gene accession number is NM_002961.

Gene Aliases:

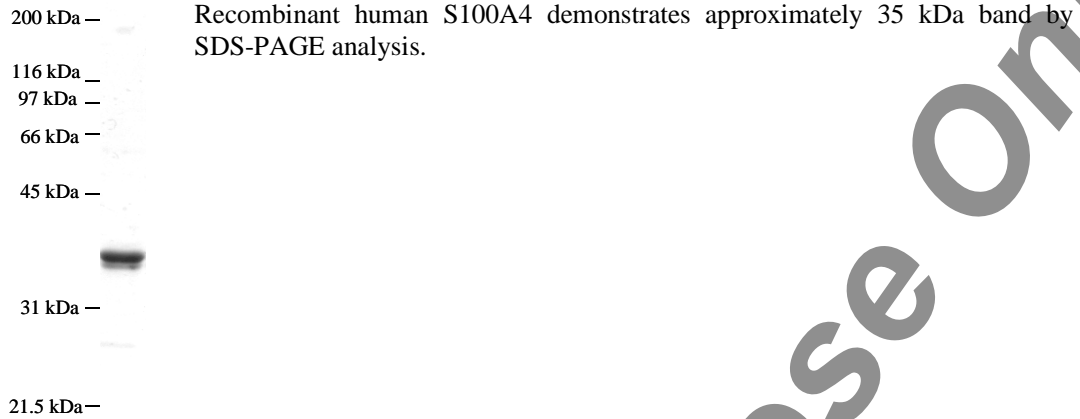
Calcium placental protein, p9ka, pEL98, mts, metastasin, calvaculin, Fsp1, 18A2

Formulation:

Recombinant human S100A4 is supplied frozen in phosphate buffered saline (PBS) containing 50 % glycerol.

For Research Use Only, Not for use in diagnostic procedures

Molecular Weight: 35kDa



Storage:

Store product at -70°C. For optimal storage, aliquot target into smaller quantities after centrifugation and store at recommended temperature. For most favorable performance, AVOID REPEATED HANDLING AND MULTIPLE FREEZE/THAW CYCLES.

Stability:

Unopened vial at -70 °C, for 1 year after delivery.

References:

1. Dunnington, D. J. (1984) The Development and Study of Single Cell-cloned Metastasizing Mammary Tumour Cell Systems in the Rat. Ph.D. thesis, University of London
2. Ebralidze, A., Tulchinsky, E., Grigorian, M., Afanayeva, A., Senin, V., Revazova, E., and Lukanidin, E. (1989) Genes Dev. 3, 1086-1093
3. Davies, B., Davies, M., Gibbs, F., Barraclough, R., and Rudland, P. (1993) Oncogene 8, 999-1008
4. Lloyd, B., Platt-Higgins, A., Rudland, P., and Barraclough, R. (1998) Oncogene 17, 465-473

Related Products

- * CircuLex S100A13 ELISA Kit: Cat# CY-8057
- * CircuLex S100A12 ELISA Kit: Cat# CY-8058
- * CircuLex S100P ELISA Kit: Cat# CY-8060
- * CircuLex S100A8-MRP8 ELISA Kit: Cat# CY-8061
- * CircuLex S100A9-MRP14 ELISA Kit: Cat# CY-8062
- * CircuLex S100A11 ELISA Kit: Cat# CY-8063
- * CircuLex S100A14 ELISA Kit: Cat# CY-8064
- * CircuLex S100A7/Psoriasin ELISA Kit: Cat# CY-8073
- * CircuLex S100A4 ELISA Kit Ver.2: Cat# CY-8086

- * Anti-Human S100A3 (Clone YK-3E3): Cat# CY-M1039
- * Anti-Human S100A4 (p9Ka): Cat# CY-P1026
- * Anti-Human S100P: Cat# CY-P1028
- * Anti-Human S100A10: Cat# CY-P1033
- * Anti-Human S100A16: Cat# CY-P1034

For Research Use Only, Not for use in diagnostic procedures

- * Anti-Human S100A3: Cat# CY-P1039
- * Anti-Human S100A2: Cat# CY-P1040

- * Human S100B: Cat# CY-R2250
- * Human S100A1: Cat# CY-R2251
- * Human S100A2: Cat# CY-R2252
- * Human S100A3: Cat# CY-R2253
- * Human S100A4: Cat# CY-R2254
- * Human S100A5: Cat# CY-R2255
- * Human S100A6: Cat# CY-R2256
- * Human S100A7: Cat# CY-R2257
- * Human S100A8: Cat# CY-R2258
- * Human S100A9: Cat# CY-R2259-G
- * Human S100A9: Cat# CY-R2259-H
- * Human S100A10: Cat# CY-R2260
- * Human S100A12: Cat# CY-R2262-G
- * Human S100A12: Cat# CY-R2262-H
- * Human S100A13: Cat# CY-R2263
- * Human S100A14: Cat# CY-R2264
- * Human S100A16: Cat# CY-R2266
- * Human S100P: Cat# CY-R2267
- * Human S100A11: Cat# CY-R2269

- * Human S100A1 Low Endotoxin: Cat# CY-R2451
- * Human S100A3 Low Endotoxin: Cat# CY-R2453
- * Human S100A4 Low Endotoxin: Cat# CY-R2454
- * Human S100A7 Low Endotoxin: Cat# CY-R2457
- * Human S100A8 Low Endotoxin: Cat# CY-R2458
- * Human S100A9 Low Endotoxin: Cat# CY-R2459-G
- * Human S100A11 Low Endotoxin: Cat# CY-R2461
- * Human S100A12 Low Endotoxin: Cat# CY-R2462-G
- * Human S100A14 Low Endotoxin: Cat# CY-R2464
- * Human S100P Low Endotoxin: Cat# CY-R2467

PRODUCED BY

CycLex Co., Ltd.
1063-103 Terasawaoka
Ina, Nagano 396-0002
Japan
Fax: +81-265-76-7618
e-mail: info@cyclex.co.jp
URL: <http://www.cyclex.co.jp>

CycLex/CircuLex products are supplied for research use only. CycLex/CircuLex products and components thereof may not be resold, modified for resale, or used to manufacture commercial products without prior written approval from CycLex Co., Ltd.. To inquire about licensing for such commercial use, please contact us via email.