



Human 14-3-3 Tau

Product Data Sheet

For Research Use Only, Not for use in diagnostic procedures

## Human 14-3-3 Tau

Human, recombinant protein expressed in *E. coli*.

Cat# CY-R2146

Amount: 100 µg (1.29 µg/µl)

Lot:

### Introduction:

14-3-3 protein family is highly conserved from plants to mammals and ubiquitously expressed cellular proteins. In mammals, there are seven isoforms encoded by a distinct gene (Beta, Epsilon, Gamma, Sigma, Eta, Tau and Zeta). More than 200 target proteins of the 14-3-3 protein family have been identified. Interactions of 14-3-3 proteins and the target proteins are dependent on phosphorylation of serine/threonine residue on the target proteins with some exceptions. 14-3-3 is deeply and widely involved in mitogenic signaling, cell cycle regulation and cell death/survival, suggesting the family plays important role in human neoplastic and neurological diseases.

### Product Description:

Full length of human 14-3-3 Tau, containing an N-terminal GST tag, expressed in *E. coli*. and purified by GSH agarose chromatography.

### Gene Information:

The gene accession number is NM\_006826.

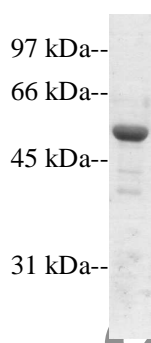
### Gene Aliases:

14-3-3 Theta, 14-3-3 Protein T-CELL, Tyrosine 3-Monooxygenase/Tryptophan 5-Monooxygenase Activation Protein Theta Isoform

### Formulation:

Recombinant human 14-3-3 Tau is supplied frozen in phosphate buffered saline (PBS) containing 50 % glycerol.

### Molecular Weight:



Coomassie blue stain

Recombinant human 14-3-3 Tau demonstrates approximately 54 kDa band by SDS-PAGE analysis.



Human 14-3-3 Tau

Product Data Sheet

**For Research Use Only, Not for use in diagnostic procedures**

**Storage:**

Store product at -70°C. For optimal storage, aliquot target into smaller quantities after centrifugation and store at recommended temperature. For most favorable performance, AVOID REPEATED HANDLING AND MULTIPLE FREEZE/THAW CYCLES.

**Stability:**

Unopened vial at -70 °C, for 1 year after delivery.

**References:**

1. Mackintosh C. Dynamic interactions between 14-3-3 proteins and phosphoproteins regulate diverse cellular processes. *Biochem J.* 2004 Jul 15;381(Pt 2):329-42.
2. Dougherty MK, Morrison DK. Unlocking the code of 14-3-3. *J Cell Sci.* 2004 Apr 15;117(Pt 10):1875-84.
3. Hermeking H. The 14-3-3 cancer connection. *Nat Rev Cancer.* 2003 Dec;3(12):931-43.
4. Berg D, Holzmann C, Riess O. 14-3-3 proteins in the nervous system. *Nat Rev Neurosci.* 2003 Sep;4(9):752-62.

**Related Products:**

- \* Human 14-3-3 Beta: Cat# CY-R2141
- \* Human 14-3-3 Epsilon: Cat# CY-R2142
- \* Human 14-3-3 Gamma: Cat# CY-R2143
- \* Human 14-3-3 Sigma: CY-R2144
- \* Human 14-3-3 Eta: Cat# CY-R2145
- \* Human 14-3-3 Tau: Cat# CY-R2146
- \* Human 14-3-3 Zeta: Cat# CY-R2147
  
- \* CircuLex 14-3-3 Gamma ELISA Kit: Cat# CY-8082

**PRODUCED BY**

CycLex Co., Ltd.  
1063-103 Terasawaoka  
Ina, Nagano 396-0002  
Japan  
Fax: +81-265-76-7618  
e-mail: [info@cyclex.co.jp](mailto:info@cyclex.co.jp)  
URL: <http://www.cyclex.co.jp>

CycLex/CircuLex products are supplied for research use only. CycLex/CircuLex products and components thereof may not be resold, modified for resale, or used to manufacture commercial products without prior written approval from CycLex Co., Ltd.. To inquire about licensing for such commercial use, please contact us via email.