

# Human S100A10 Mouse Monoclonal Antibody (Clone YK-1B12)

Cat# CY-M1036

100 µg (1.0 mg/mL x 100 µL)

Clone Name	Applications	Species	Cross-Reactivity	Molecular Wt.	Source Isotype
YK-1B12	WB, E		H	0.7-0.8 kDa	Mouse IgG1

## Background

S100A10, a member of the S100 family of Ca<sup>2+</sup>-binding proteins, is a dimeric protein composed of two 11-kDa subunits. The protein is cytosolic when present as a dimer. Typically, S100A10 is found in most cells bound to annexin A2 as the heterotetrameric (S100A10)<sub>2</sub>-(annexin A2)<sub>2</sub> complex, AII<sub>t</sub>, in a calcium-independent manner (1). The formation of AII<sub>t</sub> results in the translocation of S100A10 to the plasma membrane (2-4). S100A10 has been shown to regulate plasma membrane ion channels (5, 6) as well as cytosolic phospholipase A2 (7). In addition to an intracellular distribution, it has also been established that the heterotetrameric form of S100A10 is present on the extracellular surface of many cells (8-14). Extracellularly, the S100A10 subunit functions as a plasminogen receptor (15, 16). The penultimate and ultimate carboxyl-terminal lysines of this subunit bind tPA and plasminogen (17) and regulate the stimulation of tPA-dependent plasminogen activation (18).

**Specificity/Sensitivity:** The Human S100A10 Monoclonal Antibody detects endogenous S100A10 by western blotting and sandwich ELISA.

**Source/Purification:** The antibody is produced by immunizing mice with a recombinant full length human S100A10. IgG is purified by protein A-Sepharose chromatography.

**Recommended Antibody Dilutions:** Western blotting: 0.5-1 µg/mL

**Storage:** Supplied in 20 mM phosphate buffer (pH 7.5), 300 mM NaCl, 50 % glycerol. Store at -20°C.

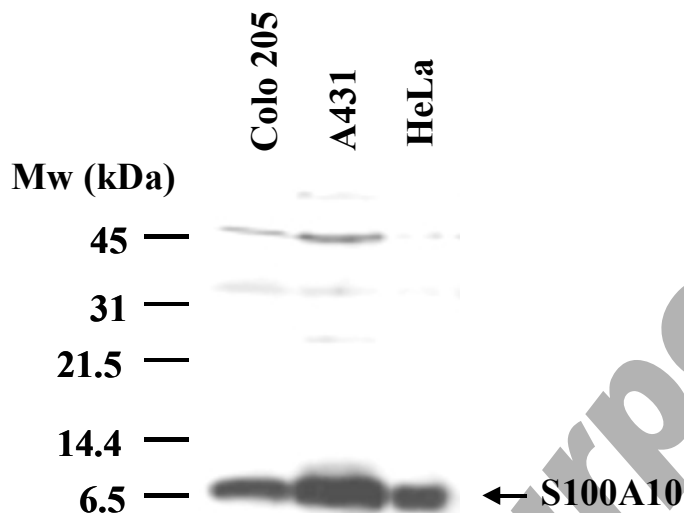
**Applications Key:** WB: Western IP: Immunoprecipitation IHC: Immunohistochemistry IC: Immunocytochemistry F: Flow cytometry E: ELISA FP: Fluorescence Polarization assay

**Species Cross-Reactivity Key:** H: human M: mouse R: rat Hm: hamster Mk: monkey Mi: mink C: chicken X: *Xenopus* Z: zebra fish All: all species expected Species enclosed in parentheses are predicted to react based on 100% sequence homology.

**General References:**

1. Donato, R. (2001) *Int. J. Biochem. Cell Biol.* 33, 637–668
2. Gerke, V., and Moss, S. E. (2002) *Physiol. Rev.* 82, 331–371
3. Donato, R., and Russo-Marie, F. (1999) *Cell Calcium* 26, 85–89
4. Seaton, B. A., and Dedman, J. R. (1998) *Biometals* 11, 399–404
5. Girard, C. et al. (2002) *EMBO J.* 21, 4439–4448
6. Okuse, K. et al. (2002) *Nature* 417, 653–656
7. Wu, T. et al. (1997) *J. Biol. Chem.* 272, 17145–17153
8. Yeatman, T. J. et al. (1993) *Clin. Exp. Metastasis* 11, 37–44
9. Tressler, R. J. et al. (1993) *J. Cell. Biochem.* 53, 265–276
10. Balch, C., and Dedman, J. R. (1997) *Exp. Cell Res.* 237, 259–263
11. Siever, D. A., and Erickson, H. P. (1997) *Int. J. Biochem. Cell Biol.* 29, 1219–1223
12. Falcone, D. J. et al. (2001) *Blood* 97, 777–784
13. Kassam, G. et al. (1998) *J. Biol. Chem.* 273, 4790–4799
14. Mai, J. et al. (2000) *J. Biol. Chem.* 275, 12806–12812
15. Kassam, G. et al. (1998) *Biochemistry* 37, 16958–16966
16. Choi, K. S. et al. (2003) *FASEB J.* 17, 235–246
17. MacLeod, T. J. et al. (2003) *J. Biol. Chem.* 278, 25577–25584
18. Fogg, D. K. et al. (2002) *Biochemistry* 41, 4953–4961

Fig. 1. Western blot analysis of Human S100A10



## Western blotting Protocol

### Solutions and Reagents

*Note: Prepare solutions with Milli-Q or equivalently purified water.*

**Transfer Buffer:** 25 mM Tris base, 0.2 M glycine, 20% methanol (pH 8.5)

**SDS Sample Buffer (1X):** 62.5 mM Tris-HCl (pH 6.8 at 25°C), 2% w/v SDS, 10% glycerol, 50 mM DTT, 0.01% w/v bromophenol blue or phenol red

**Blocking Buffer:** 1X TBS, 0.1% Tween-20 with 5% w/v nonfat dry milk; for 150 mL, add 15 mL 10X TBS to 135 mL water, mix. Add 7.5 g nonfat dry milk and mix well. While stirring, add 0.15 mL Tween-20 (100%).

**10X TBS (Tris-buffered saline):** To prepare 1 liter of 10X TBS: 24.2 g Tris base, 80 g NaCl; adjust pH to 7.6 with HCl (use at 1X).

**Primary Antibody Dilution Buffer:** 1X TBS, 0.1% Tween-20 with 5% blocking agent for 20 mL, add 2 mL 10X TBS to 18 mL water, mix. Add 1.0 g BSA and mix well. While stirring, add 20  $\mu$ L Tween-20 (100%).

**Chemiluminescent HRP Detection:** secondary anti-rabbit antibody conjugated to horseradish peroxidase (HRP), ECL™ chemiluminescent reagent (Amersham Pharmacia)

**Wash Buffer TBS/T:** 1X TBS, 0.1% Tween-20

**Blotting Membrane:** This protocol has been optimized for nitrocellulose membranes, which we recommend. PVDF membranes may also be used.

### Protein Blotting

A general protocol for sample preparation is described below.

1. Treat cells by adding fresh media containing regulator for desired time.
2. Aspirate media from cultures; wash cells with 1X PBS, aspirate.
3. Lyse cells by adding 1X SDS Sample Buffer (100  $\mu$ L per well of 6-well plate or 500  $\mu$ L per plate of 10 cm<sup>2</sup> plate). Immediately scrape the cells off the plate and transfer the extract to a microcentrifuge tube.

**For Research Use Only, Not for use in diagnostic procedures**

Keep on ice.

4. Sonicate for 10–15 seconds to shear DNA and reduce sample viscosity.
5. Heat a 20  $\mu$ L sample to 95–100°C for 5 minutes, cool on ice.
6. Microcentrifuge for 5 minutes.
7. Load 20  $\mu$ L onto SDS-PAGE gel (10 cm x 10 cm).
8. Electrotransfer to nitrocellulose membrane.

**Membrane Blocking and Antibody Incubations**

*Note: Volumes are for 10 cm x 10 cm (100 cm<sup>2</sup>) of membrane; for different sized membranes, adjust volumes accordingly.*

1. (Optional) After transfer, wash nitrocellulose membrane with 25 mL TBS for 5 minutes at room temperature.
2. Incubate membrane in 25 mL of Blocking Buffer for 1 hour at room temperature.
3. Wash 3 times for 5 minutes each with 15 ml of TBS/T.
4. Incubate membrane and primary antibody (at the appropriate dilution) in 10 mL Primary Antibody Dilution Buffer with gentle agitation overnight at 4°C.
5. Wash 3 times for 5 minutes each with 15 mL of TBS/T.
6. Incubate membrane with HRP-conjugated secondary antibody (1:3000 in 10 mL of Blocking Buffer with gentle agitation for 1 hour at room temperature.
7. Wash 3 times for 5 minutes each with 15 mL of TBS/T.

**Detection of Proteins**

1. Incubate membrane with 4 mL ECL™ with gentle agitation for 1 minute at room temperature.
2. Drain membrane of excess developing solution, do not let dry, wrap in plastic wrap and expose to x-ray film. An initial ten-second exposure should indicate the proper exposure time.

**Related Products**

- \* CircuLex S100A13 ELISA Kit: Cat# CY-8057
- \* CircuLex S100A12 ELISA Kit: Cat# CY-8058
- \* CircuLex S100P ELISA Kit: Cat# CY-8060
- \* CircuLex S100A8-MRP8 ELISA Kit: Cat# CY-8061
- \* CircuLex S100A9-MRP14 ELISA Kit: Cat# CY-8062
- \* CircuLex S100A11 ELISA Kit: Cat# CY-8063
- \* CircuLex S100A14 ELISA Kit: Cat# CY-8064
- \* CircuLex S100A7/Psoriasis ELISA Kit: Cat# CY-8073
- \* CircuLex S100A4 ELISA Kit Ver.2: Cat# CY-8086
  
- \* Anti-Human S100A3 (Clone YK-3E3): Cat# CY-M1039
- \* Anti-Human S100A4 (p9Ka): Cat# CY-P1026
- \* Anti-Human S100P: Cat# CY-P1028
- \* Anti-Human S100A10: Cat# CY-P1033
- \* Anti-Human S100A16: Cat# CY-P1034
- \* Anti-Human S100A3: Cat# CY-P1039
- \* Anti-Human S100A2: Cat# CY-P1040
  
- \* Human S100B: Cat# CY-R2250
- \* Human S100A1: Cat# CY-R2251
- \* Human S100A2: Cat# CY-R2252
- \* Human S100A3: Cat# CY-R2253
- \* Human S100A4: Cat# CY-R2254

- \* Human S100A5: Cat# CY-R2255
- \* Human S100A6: Cat# CY-R2256
- \* Human S100A7: Cat# CY-R2257
- \* Human S100A8: Cat# CY-R2258
- \* Human S100A9: Cat# CY-R2259-G
- \* Human S100A9: Cat# CY-R2259-H
- \* Human S100A10: Cat# CY-R2260
- \* Human S100A12: Cat# CY-R2262-G
- \* Human S100A12: Cat# CY-R2262-H
- \* Human S100A13: Cat# CY-R2263
- \* Human S100A14: Cat# CY-R2264
- \* Human S100A16: Cat# CY-R2266
- \* Human S100P: Cat# CY-R2267
- \* Human S100A11: Cat# CY-R2269
  
- \* Human S100A1 Low Endotoxin: Cat# CY-R2451
- \* Human S100A3 Low Endotoxin: Cat# CY-R2453
- \* Human S100A4 Low Endotoxin: Cat# CY-R2454
- \* Human S100A7 Low Endotoxin: Cat# CY-R2457
- \* Human S100A8 Low Endotoxin: Cat# CY-R2458
- \* Human S100A9 Low Endotoxin: Cat# CY-R2459-G
- \* Human S100A11 Low Endotoxin: Cat# CY-R2461
- \* Human S100A12 Low Endotoxin: Cat# CY-R2462-G
- \* Human S100A14 Low Endotoxin: Cat# CY-R2464
- \* Human S100P Low Endotoxin: Cat# CY-R2467

**PRODUCED BY**

CycLex Co., Ltd.  
1063-103 Terasawaoka  
Ina, Nagano 396-0002  
Japan  
Fax: +81-265-76-7618  
e-mail: [info@cyclex.co.jp](mailto:info@cyclex.co.jp)  
URL: <http://www.cyclex.co.jp>

CycLex/CircuLex products are supplied for research use only. CycLex/CircuLex products and components thereof may not be resold, modified for resale, or used to manufacture commercial products without prior written approval from CycLex Co., Ltd.. To inquire about licensing for such commercial use, please contact us via email.