



Protein Tyrosine Phosphatase PTPN8/ PTPN22

Product Data Sheet

For Research Use Only, Not for use in diagnostic procedures

Protein Tyrosine Phosphatase PTPN8/ PTPN22

Human, recombinant protein expressed in *E. coli.*, Active

Cat# CY-E1365

Amount: 50µg (0.69µg/µl)

Lot:

Introduction:

PTPN8/PTPN22 was identified as an intracellular phosphatase associated with CSK and GRB2. The Src homology-3 (SH3) domain of these proteins associates with a proline-rich region of PTPN8/PTPN22. Overexpression of PTPN8/PTPN22 in a T-cell line inhibits transcriptional activity initiated by antibodies against T-cell receptor and CD28 costimulatory molecule. Genetic variants in PTPN8/PTPN22 contribute to the development of rheumatoid arthritis.

Product Description:

Phosphatase domain of human PTPN8/PTPN22, containing an N-terminal GST tag, expressed in *E. coli.* and purified by GSH agarose chromatography.

Gene Information:

The gene accession number is NM_015967.

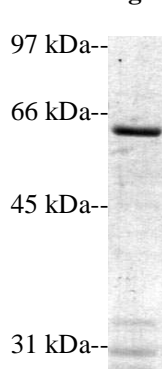
Gene Aliases:

Protein tyrosine phosphatase non-receptor type 22, PTPN8, PTPN22, LYP, PEP, Lyp1, Lyp2

Formulation:

Recombinant PTPN8/PTPN22 is supplied frozen in a buffer containing 100mM NaCl, 20mM Tris-HCl (pH 7.0), 1mM DTT, 1mM EDTA and 50% glycerol. Use a same buffer for dilution when needed.

Molecular Weight:



Coomassie blue stain

Recombinant PTPN8/PTPN22 demonstrates approximately 62 kDa band by SDS-PAGE analysis.



Protein Tyrosine Phosphatase PTPN8/ PTPN22

Product Data Sheet

For Research Use Only, Not for use in diagnostic procedures

Specific Activity:

22 units/ μ g. This unit value is determined at the point of production and may vary with time and various conditions. Specific Activity also varies among production lots.

Unit Definitions:

One unit is defined as the amount of phosphatase required to release 1 pmol of phosphate from CycLex's PTP substrate-1 per minute at 30°C.

Storage:

Store product at -70°C. For optimal storage, aliquot target into smaller quantities after centrifugation and store at recommended temperature. For most favorable performance, AVOID REPEATED HANDLING AND MULTIPLE FREEZE/THAW CYCLES.

Stability:

Unopened vial at -70 °C, for 1 year after delivery.

References:

1. Cohen S, Dadi H, Shaoul E, Sharfe N, Roifman CM. Cloning and characterization of a lymphoid-specific, inducible human protein tyrosine phosphatase, Lyp. Blood. 1999 Mar 15;93(6):2013-24.
2. Carlton VE, Hu X, Chokkalingam AP, Schrodi SJ, Brandon R, Alexander HC, Chang M, Catanese JJ, Leong DU, Ardlie KG, Kastner DL, Seldin MF, Criswell LA, Gregersen PK, Beasley E, Thomson G, Amos CI, Begovich AB. PTPN22 genetic variation: evidence for multiple variants associated with rheumatoid arthritis. Am J Hum Genet. 2005 Oct;77(4):567-81.

PRODUCED BY

CycLex Co., Ltd.
1063-103 Terasawaoka
Ina, Nagano 396-0002
Japan
Fax: +81-265-76-7618
e-mail: info@cyclex.co.jp
URL: <http://www.cyclex.co.jp>

CycLex/CircuLex products are supplied for research use only. CycLex/CircuLex products and components thereof may not be resold, modified for resale, or used to manufacture commercial products without prior written approval from CycLex Co., Ltd. To inquire about licensing for such commercial use, please contact us via email.