



Human YKL-39 ELISA Kit

User's Manual

For Research Use Only, Not for use in diagnostic procedures

ELISA Kit for Measuring Human YKL-39

CircuLex Human YKL-39 ELISA Kit

Cat# CY-8087

Intended Use.....	1
Storage.....	1
Introduction.....	2
Principle of the Assay.....	2-3
Materials Provided.....	3
Materials Required but not Provided.....	4
Precautions and Recommendations.....	5
Sample Collection and Storage.....	6
Detailed Protocol.....	7-8
Calculations.....	9
Measurement Range.....	9
Troubleshooting.....	9
Reagent Stability.....	10
Assay Characteristics.....	10-12
Example of Test Results.....	13-14
References.....	15
Related Products.....	16

Intended Use

The CycLex Research Product **CircuLex Human YKL-39 ELISA Kit** is used for the quantitative measurement of human YKL-39 in serum, plasma, cell culture medium and other biological media.

This assay kit is for research use only and not for use in diagnostic or therapeutic procedures.

Storage

- Upon receipt store all components at 4°C.
- Don't expose reagents to excessive light.

Introduction

YKL-39, also known as chitinase 3-like 2, is secreted chitinase-like protein which contains Glyco_18 domain with no chitinase catalytic activity but with putative lectin properties (1, 2). In contrast to its closest homologue YKL-40, YKL-39 is not a glycoprotein. YKL-39 is secreted by articular chondrocytes, also synoviocytes (3) and activates signal-regulated kinases ERK1/ERK2 in human embryonic kidney cells (4). Increased levels of YKL-39 have been demonstrated in synovial fluids of patients with osteoarthritis (OA) or rheumatoid arthritis (RA) (5, 6) as well as in malignant tumors, particularly in glioblastomas (7). It is currently recognized as a biomarker for the activation of chondrocytes and the progress of the osteoarthritis in human (5). In addition, autoantibodies to YKL-39 were detected in 8–11.8% of patients with RA (8, 9), and 11.1% of patients with OA (9), while only 1% of patients with RA had autoantibodies to YKL-40 (8).

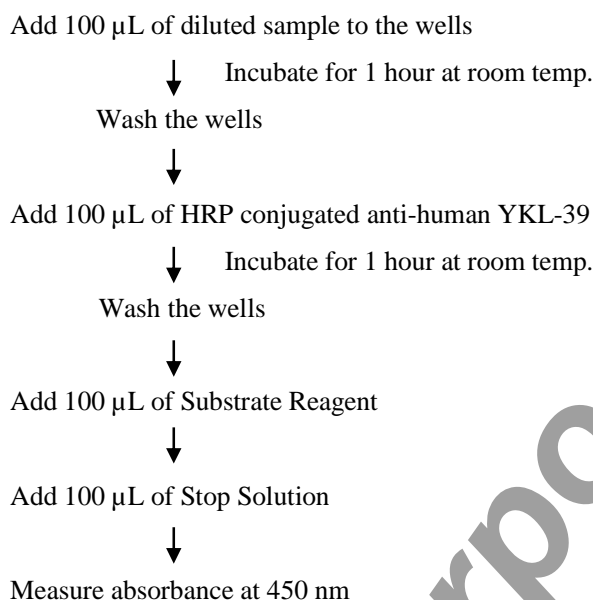
Maturation of monocyte derived macrophages in the presence of Th2 cytokine IL-4 and TGF-beta leads to the strong activation of YKL-39 expression. Thus elevated levels of YKL-39 observed during chronic inflammations can not be attributed solely to the activity of chondrocytes. In perspective, YKL-39 is also proposed as a useful biomarker to detect macrophage-specific response in tumor, atherosclerosis and neurodegenerative diseases including Alzheimer disease, in addition to the chondrocyte-specific activation.

Principle of the Assay

The CircuLex Human YKL-39 ELISA Kit employs the quantitative sandwich enzyme immunoassay technique. An antibody specific for human YKL-39 has been pre-coated onto a microplate. Standards and samples are pipetted into the wells and the immobilized antibody binds any human YKL-39 present. After washing away any unbound substances, an HRP conjugated antibody specific for human YKL-39 is added to the wells. Following a wash to remove any unbound antibody HRP conjugate, the remaining conjugate is allowed to react with the substrate H₂O₂-tetramethylbenzidine. The reaction is stopped by addition of acidic solution and absorbance of the resulting yellow product is measured at 450 nm. The absorbance is proportional to the concentration of human YKL-39. A standard curve is constructed by plotting absorbance values versus human YKL-39 concentrations of calibrators, and concentrations of unknown samples are determined using this standard curve.

For Research Use Only, Not for use in diagnostic procedures

Summary of Procedure



Materials Provided

All samples and standards should be assayed in duplicate. The following components are supplied and are sufficient for the one 96-well microplate kit.

Microplate: One microplate supplied ready to use, with 96 wells (12 strips of 8-wells) in a foil, zip-lock bag with a desiccant pack. Wells are coated with anti-human YKL-39 antibody as a capture antibody.

10X Wash Buffer: One bottle containing 100 mL of 10X buffer containing 2 % Tween®-20

Dilution Buffer: One bottles containing 50 mL of 1X buffer; use for sample dilution. Ready to use.

Human YKL-39 Standard: One vial containing 12 ng of lyophilized recombinant human YKL-39

HRP conjugated Detection Antibody: One bottle containing 12 mL of HRP (horseradish peroxidase) conjugated anti-human YKL-39 antibody. Ready to use.

Substrate Reagent: One bottle containing 20 mL of the chromogenic substrate, tetra-methylbenzidine (TMB). Ready to use.

Stop Solution: One bottle containing 20 mL of 1 N H₂SO₄. Ready to use.

Materials Required but not Provided

- **Pipettors:** 2-20 μ L, 20-200 μ L and 200-1000 μ L precision pipettors with disposable tips.
- **Precision repeating pipettor**
- **Orbital microplate shaker**
- **Microcentrifuge and tubes** for sample preparation.
- **Vortex mixer**
- **Microplate washer:** optional (Manual washing is possible but not preferable)
- **Plate reader** capable of measuring absorbance in 96-well plates at dual wavelengths of 450 nm/540 nm. Dual wavelengths of 450/550 or 450/595 nm can also be used. The plate can also be read at a single wavelength of 450 nm, which will give a somewhat higher reading.
- **Software package facilitating data generation and analysis :**optional
- **500 or 1000 mL graduated cylinder**
- **Reagent reservoirs**
- **Deionized water of the highest quality**
- **Disposable paper towels**

Precautions and Recommendations

- Allow all the components to come to room temperature before use.
- All microplate strips that are not immediately required should be returned to the zip-lock pouch, which must be carefully resealed to avoid moisture absorption.
- Do not use kit components beyond the indicated kit expiration date.
- Use only the microtiter wells provided with the kit.
- Rinse all detergent residue from glassware.
- Use deionized water of the highest quality.
- Do not mix reagents from different kits.
- The buffers and reagents in this kit may contain preservatives or other chemicals. Care should be taken to avoid direct contact with these reagents.
- Do not mouth pipette or ingest any of the reagents.
- Do not smoke, eat, or drink when performing the assay or in areas where samples or reagents are handled.
- Dispose of tetra-methylbenzidine (TMB) containing solutions in compliance with local regulations.
- Avoid contact with the acidic Stop Solution and Substrate Solution, which contains hydrogen peroxide.
- Wear gloves and eye protection when handling immunodiagnostic materials and samples of human origin, and these reagents. In case of contact with the Stop Solution and the Substrate Solution, wash skin thoroughly with water and seek medical attention, when necessary.
- **Biological samples may be contaminated with infectious agents. Do not ingest, expose to open wounds or breathe aerosols. Wear protective gloves and dispose of biological samples properly.**
- **CAUTION: Sulfuric Acid is a strong acid. Wear disposable gloves and eye protection when handling Stop Solution.**

Sample Collection and Storage

Serum: Use a serum separator tube and allow samples to clot for 60 ± 30 minutes. Centrifuge the samples at 4°C for 10 minutes at 1,000 x g. Remove serum and assay immediately or store samples on ice for up to 6 hours before assaying. Aliquots of serum may also be stored at below -70°C for extended periods of time. Avoid repeated freeze-thaw cycles.

Plasma: Collect plasma using EDTA-Na₂ as the anticoagulant. If possible, collect the plasma into a mixture of EDTA-Na₂ and Futhan5 to stabilize the sample against spontaneous *in vitro* complement activation. Immediately centrifuge samples at 4°C for 15 minutes at 1,000 x g. Assay immediately or store samples on ice for up to 6 hours before assaying. Aliquots of plasma may also be stored at below -70°C for extended periods of time. Avoid repeated freeze-thaw cycles.

Note: Citrate plasma has not been validated for use in this assay.

Other biological samples: Remove any particulates by centrifugation and assay immediately or aliquot and store samples at below -70°C. Avoid repeated freeze-thaw cycles.

Detailed Protocol

The CycLex Research Product **CircuLex Human YKL-39 ELISA Kit** is provided with removable strips of wells so the assay can be carried out on separate occasions using only the number of strips required for the particular determination. Since experimental conditions may vary, an aliquot of the Human YKL-39 Standard within the kit, should be included in each assay as a calibrator. Disposable pipette tips and reagent troughs should be used for all liquid transfers to avoid cross-contamination of reagents or samples.

Preparation of Working Solutions

All reagents need to be brought to room temperature prior to the assay. Assay reagents are supplied ready-to-use, with the exception of **10X Wash Buffer** and **Human YKL-39 Standard**.

1. Prepare a working solution of Wash Buffer by adding 100 mL of the **10X Wash Buffer** to 900 mL of deionized (distilled) water (ddH₂O). Mix well. Store at 4°C for two weeks or -20°C for long-term storage.
2. Reconstitute **Human YKL-39 Standard** with **0.5 mL** of ddH₂O. The concentration of the human YKL-39 in vial should be **24 ng/mL**, which is referred as a **Master Standard** of human YKL-39.

Prepare Standard Solutions as follows:

Use the **Master Standard** to produce a dilution series (below). Mix each tube thoroughly before the next transfer. The 2,400 pg/mL standard (Std.1) serves as the highest standard. The **Dilution Buffer** serves as the zero standard (Blank).

	Volume of Standard	Dilution Buffer	Concentration
Std.1	60 µL of Master Standard (24 ng/mL)	540 µL	2,400 pg/mL
Std.2	300 µL of Std. 1 (2,400 pg/mL)	300 µL	1,200 pg/mL
Std.3	300 µL of Std. 2 (1,200 pg/mL)	300 µL	600 pg/mL
Std.4	300 µL of Std. 3 (600 pg/mL)	300 µL	300 pg/mL
Std.5	300 µL of Std. 4 (300 pg/mL)	300 µL	150 pg/mL
Std.6	300 µL of Std. 5 (150 pg/mL)	300 µL	75 pg/mL
Std.7	300 µL of Std. 6 (75 pg/mL)	300 µL	37.5 pg/mL
Blank	-	300 µL	0 pg/mL

Note: Do not use a Repeating pipette. Change tips for every dilution. Wet tip with Dilution Buffer before dispensing. Unused portions of Master Standards should be aliquoted and stored at below -70°C immediately. Avoid multiple freeze and thaw cycles.

Sample Preparation

- Serum and plasma samples require a 25-fold dilution.
- Other biological samples require neat to appropriate dilution.

Assay Procedure

1. Remove the appropriate number of microtiter wells from the foil pouch and place them into the well holder. Return any unused wells to the foil pouch, refold, seal with tape and store at 4°C.
2. Dilute serum sample with Dilution Buffer. (See "Sample Preparation" above.)
3. Pipette **100 µL** of **Standard Solutions (Std1-Std7, Blank)** and **diluted samples** in duplicates, into the appropriate wells.
4. Incubate the plate at room temperature (ca.25°C) for 1 hour, shaking at ca. 300 rpm on an orbital microplate shaker.
5. Wash 4-times by filling each well with Wash Buffer (350 µL) using a squirt bottle, multi-channel pipette, manifold dispenser or microplate washer.
6. Add **100 µL** of **HRP conjugated Detection Antibody** into each well.
7. Incubate the plate at room temperature (ca.25°C) for 1 hour, shaking at ca. 300 rpm on an orbital microplate shaker.
8. Wash 4-times by filling each well with Wash Buffer (350 µL) using a squirt bottle, multi-channel pipette, manifold dispenser or microplate washer.
9. Add **100 µL** of **Substrate Reagent**. Avoid exposing the microtiter plate to direct sunlight. Covering the plate with e.g. aluminum foil is recommended. Return Substrate Reagent to 4°C immediately after the necessary volume is removed
10. Incubate the plate at room temperature (ca.25°C) for 10-20 minutes, shaking at ca. 300 rpm on an orbital microplate shaker. The incubation time may be extended up to 30 minutes if the reaction temperature is below than 20°C.
11. Add **100 µL** of **Stop Solution** to each well in the same order as the previously added Substrate Reagent.
12. Measure absorbance in each well using a spectrophotometric microplate reader at dual wavelengths of 450/540 nm. Dual wavelengths of 450/550 or 450/595 nm can also be used. Read the microplate at 450 nm if only a single wavelength can be used. Wells must be read within 30 minutes of adding the Stop Solution.

Note-1: Complete removal of liquid at each step is essential to good performance. After the last wash, remove any remaining Wash Buffer by aspirating or decanting. Invert the plate and blot it against clean paper towels.

Note-2: Reliable standard curves are obtained when either O.D. values do not exceed 0.25 units for the blank (zero concentration), or 3.0 units for the highest standard concentration. The plate should be monitored at 5-minute intervals for approximately 30 minutes.

Note-3: If the microplate reader is not capable of reading absorbance greater than the absorbance of the highest standard, perform a second reading at 405 nm. A new standard curve, constructed using the values measured at 405 nm, is used to determine YKL-39 concentration of off-scale samples. The readings at 405 nm should not replace the on-scale readings at 450 nm.

Calculations

Average the duplicate readings for each standard, control, and sample and subtract the average zero standard optical density. Plot the optical density for the standards versus the concentration of the standards and draw the best curve. The data can be linearized by using log/log paper and regression analysis may be applied to the log transformation. To determine the human YKL-39 concentration of each sample, first find the absorbance value on the y-axis and extend a horizontal line to the standard curve. At the point of intersection, extend a vertical line to the x-axis and read the corresponding YKL-39 concentration. If the samples have been diluted, the concentration read from the standard curve must be multiplied by the dilution factor.

1. The dose-response curve of this assay fits best to a sigmoidal 4-parameter logistic equation. The results of unknown samples can be calculated with any computer program having a 4-parameter logistic function. It is important to make an appropriate mathematical adjustment to accommodate for the dilution factor.
2. Most microtiter plate readers perform automatic calculations of analyte concentration. The calibration curve is constructed by plotting the absorbance (Y) of calibrators versus log of the known concentration (X) of calibrators, using the four-parameter function. Alternatively, the logit log function can be used to linearize the calibration curve (i.e. logit of absorbance (Y) is plotted versus log of the known concentration (X) of calibrators).

Measurement Range

The measurement range is 37.5 pg/mL to 2,400 pg/mL. Any sample reading higher than the highest standard should be diluted with Dilution Buffer in higher dilution and re-assayed. Dilution factors need to be taken into consideration in calculating the human YKL-39 concentration.

Troubleshooting

1. The Human YKL-39 Standard should be run in duplicate, using the protocol described in the **Detailed Protocol**. Incubation times or temperatures significantly different from those specified may give erroneous results.
2. Poor duplicates, accompanied by elevated values for wells containing no sample, indicate insufficient washing. If all instructions in the **Detailed Protocol** were followed accurately, such results indicate a need for washer maintenance.
3. Overall low signal may indicate that desiccation of the plate has occurred between the final wash and addition of Substrate Reagent. Do not allow the plate to dry out. Add Substrate Reagent immediately after wash.

Reagent Stability

All of the reagents included in the CycLex Research Product **CircuLex Human YKL-39 ELISA Kit** have been tested for stability. Reagents should not be used beyond the stated expiration date. Upon receipt, kit reagents should be stored at 4°C, except the reconstituted YKL-39 Standard must be stored at below -70°C. Coated assay plates should be stored in the original foil bag sealed by the zip lock and containing a desiccant pack.

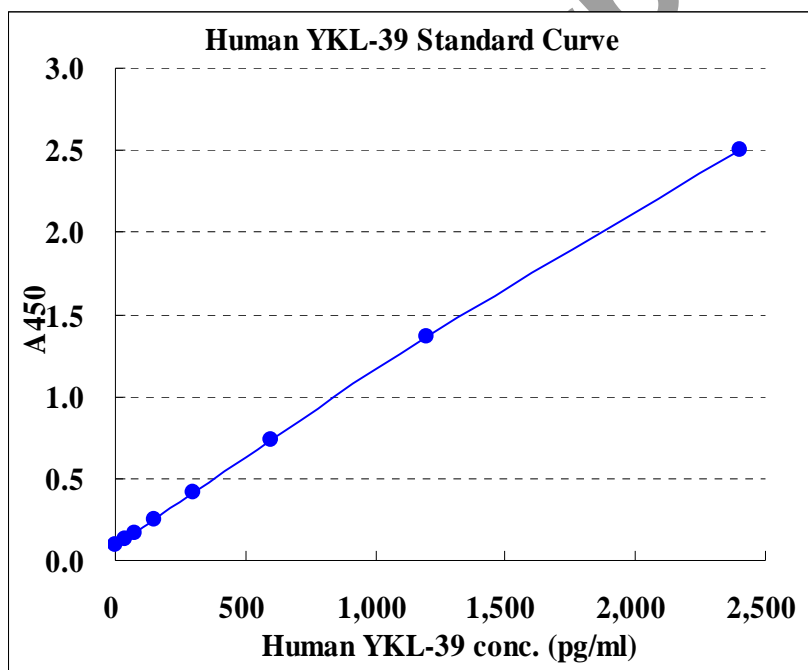
Assay Characteristics

1. Sensitivity

The limit of detection (defined as such a concentration of human YKL-39 giving absorbance higher than mean absorbance of blank* plus three standard deviations of the absorbance of blank in 24 assay) is better than 35.1 pg/mL of sample.

* Dilution Buffer is pipetted into blank wells.

Typical standard curve



2. Precision

Intra-assay Precision (Precision within an assay)

Three samples of known concentration were tested sixteen times on one plate to assess intra-assay precision.

- Intra-assay (Within-Run, n=16) CV=2.4-5.7 %

	Human YKL39 conc. (pg/ml)		
	Sample 1	Sample 2	Sample 3
1	234.8	482.0	688.9
2	238.4	508.2	675.2
3	239.7	422.9	712.6
4	238.0	480.7	690.1
5	222.8	499.1	699.0
6	234.2	474.0	694.5
7	223.2	492.2	660.4
8	236.7	500.9	648.3
9	227.5	495.0	683.1
10	227.0	473.7	674.4
11	236.8	438.8	683.8
12	239.8	437.2	689.1
13	232.5	436.0	700.4
14	222.6	496.8	686.1
15	245.1	451.6	660.1
16	234.1	479.1	673.3
MAX.	245.1	508.2	712.6
MIN.	222.6	422.9	648.3
MEAN	233.3	473.0	682.5
S.D.	6.8	27.2	16.7
C.V.	2.9%	5.7%	2.4%

Inter-assay Precision (Precision between assays)

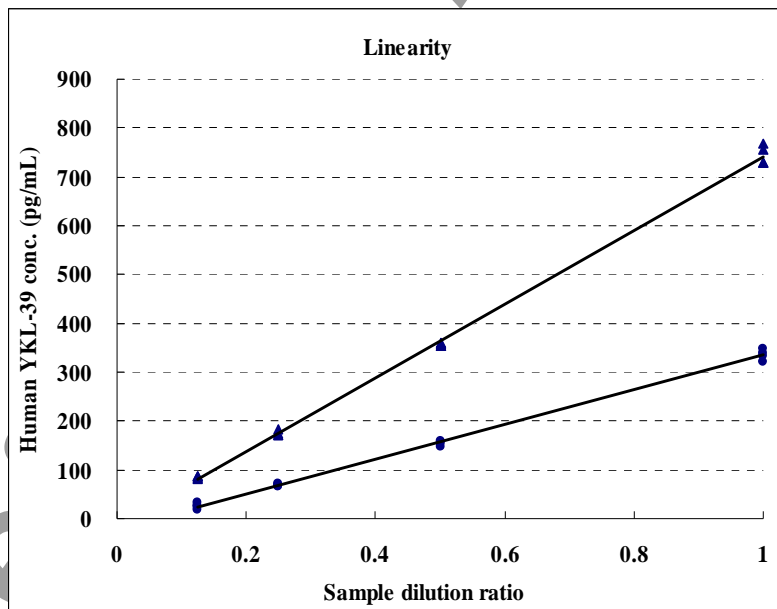
Two samples of known concentration were tested in five separate assays to assess inter-assay precision.

- Inter-assay (Run-to-Run, n=5) CV=5.0 - 7.4 %

Human YKL39 conc. (pg/ml)		
	Sample 1	Sample 2
1	347.9	909.0
2	286.1	863.9
3	305.5	797.4
4	313.8	822.5
5	301.2	860.4
MAX.	347.9	909.0
MIN.	286.1	797.4
MEAN	310.9	850.6
S.D.	23.0	42.7
C.V.	7.4%	5.0%

3. Linearity

To assess the linearity of the assay, samples containing and/or spiked with high concentrations of human YKL-39 were serially diluted with the Dilution Buffer to produce samples with values within the dynamic range of the assay.



Example of Test Results

Fig.1 Concentrations of human YKL-39 in cell lysates of three cell lines

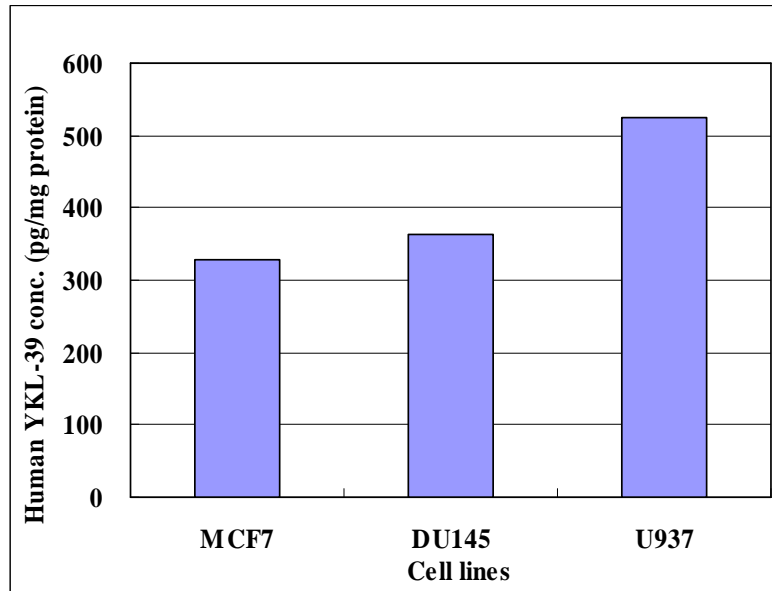


Fig.2 Concentrations of human YKL-39 in conditioned media of three cell lines

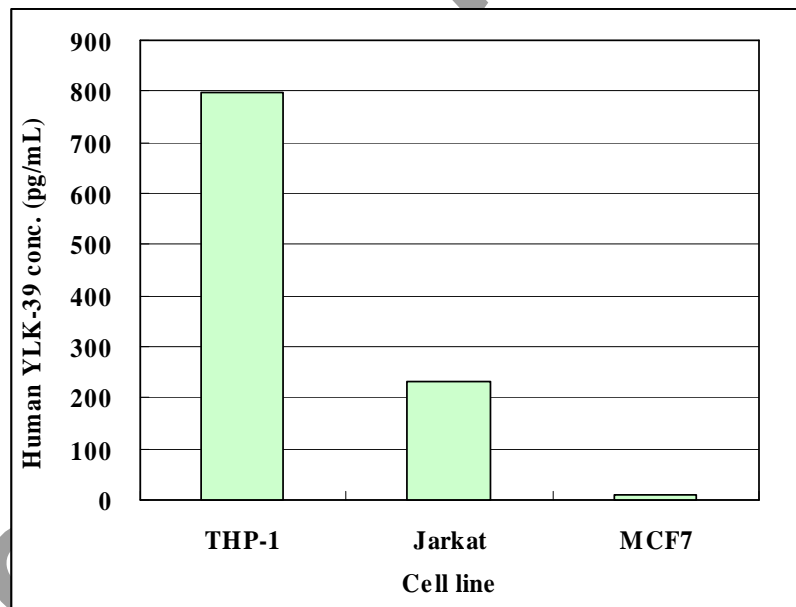
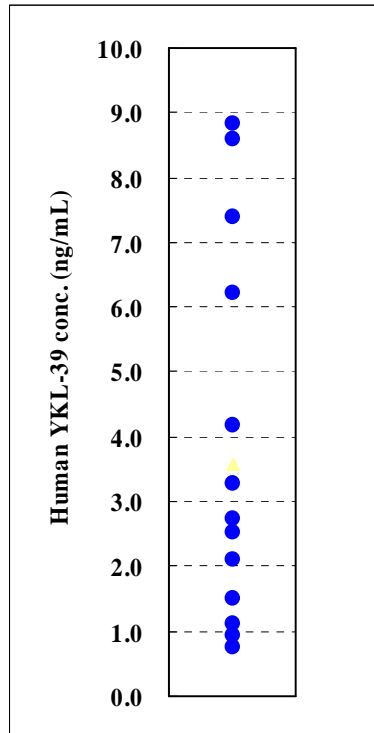


Fig.3 Human YKL-39 levels in 15 sera of healthy volunteers



References

1. Funkhouser, J.D. and Aronson, NN. 2007. Chitinase family GH18: evolutionary insights from the genomic history of a diverse protein family. *BMC Evol. Biol.*, **7**: 96.
2. Kzhyshkowska, J., Gratchev, A. and Goerdts, S. 2007. Human Chitinases and Chitinase-Like Proteins as Indicators for Inflammation and Cancer. *Biomarker Insights*, **2**: 128.
3. Hu, B. Trinh, K. Figueira, WF. Price, PA. 1996. Isolation and sequence of a novel human chondrocyte protein to mammalian members of the chitinase protein family. *J Biol Chem.*, **271**: 19415.
4. Areshkov, PA. and Kavsan, VM. 2010. Chitinase 3-like protein 2 (CHI3L2, YKL-39) activates phosphorylation of extracellular signal-regulated kinases ERK1/ERK2 in human embryonic kidney (HEK293) and human glioblastoma (U87 MG) cells. *Tsitol Genet.*, **44**: 3.
5. Knorr, T. Obermayr, F. Bartnik, E. Zien, A. Aigner, T. 2003. YKL-39 (chitinase 3-like protein 2), but not YKL-40 (chitinase 3-like protein 1), is up regulated in osteoarthritic chondrocytes. *Ann Rheum Dis.*, **62**: 995.
6. Steck, E. Breit, S. Breusch, S.J. et al. 2002. Enhanced expression of the human chitinase 3-like 2 gene (YKL-39) but not chitinase 3-like 1 gene (YKL-40) in osteoarthritic cartilage. *Biochem. Biophys. Res. Commun.*, **299**: 109.
7. Kavsan, V. Dmitrenko, V. Boyko, O. et al. 2008. Overexpression of YKL-39 Gene in Glial Brain Tumors. *Scholarly Research Exchange*, 2008, Article ID: 814849, doi:10.3814/2008/814849.
8. Sekine, T. Masuko-Hongo, K. Matsui, T. et al. 2001. Recognition of YKL-39, a human cartilage related protein, as a target antigen in patients with rheumatoid arthritis. *Ann. Rheum. Dis.*, **60**: 49.
9. Tsuruha, J. Masuko-Hongo, K. Kato, T. et al. 2002. Autoimmunity against YKL-39, a human cartilage derived protein, in patients with osteoarthritis. *J. Rheumatol.*, **29**: 1459.

Related Products

- * CircuLex Human Chitotriosidase ELISA Kit: Cat# CY-8074
- * CycLex Chitotriosidase Fluorometric Assay Kit: Cat# CY-1249
- * CircuLex Human YKL-40 ELISA Kit: Cat# CY-8088 : Coming soon!

PRODUCED BY

CycLex Co., Ltd.
1063-103 Terasawaoka
Ina, Nagano 396-0002
Japan
Fax: +81-265-76-7618
e-mail: info@cyclex.co.jp
URL: <http://www.cyclex.co.jp>

CycLex/CircuLex products are supplied for research use only. CycLex/CircuLex products and components thereof may not be resold, modified for resale, or used to manufacture commercial products without prior written approval from CycLex Co., Ltd.. To inquire about licensing for such commercial use, please contact us via email.